

A cubist painting of a woman, possibly by Pablo Picasso, featuring fragmented, geometric shapes and a muted color palette of earthy tones. The woman is depicted in a dynamic, seated or reclining pose, with her face and body composed of sharp, angular planes.

# BE A ART

**JULY  
2024**



# EDITORS' WELCOME

Where has the time gone ... mid year already!!

Our first Exhibition was very well received and now 'Our City Exhibition' has been and gone. Well done !!

Sandy & I have been busily gathering info to pass on to you re upcoming activities, morning teas, exhibitions and lots more. Don't forget our other activities and you can always find updated information on our website [www.artlas.org.au](http://www.artlas.org.au)

We are fortunate to have a skilled and hard working Committee who give up enormous amounts of time to keep our Society going, as well as members who are happy and willing to help in other areas. It's quite mind blowing that our Society is still going strong!!

I enjoyed my little holiday from the newsletter but back to it now!! Looking to implementing a couple of ideas so watch this space.

Gerry Jensen  
(& Sandy Astill)

LAS Studio  
RSL  
33 Wellington St  
Launceston

Cover Image:  
Girl with Mandolin, Picasso 1910  
<https://www.pablopicasso.org/cubism.jsp>



# Vice Presidents Report

Hello members,

Our most recent highlight and achievement has been our midyear Exhibition ‘Our City’. This was a popular theme with more than seventy entries. It has been a delight viewing each entry and seeing the artists’ interpretation of our city. Contributors should all feel a sense of pride in their work. Congratulations to prize winners Fred Fullerton and Gerry Jensen winning first and second prizes.

Our committee has cancelled our October exhibition for this year and will put their energies into next year’s exhibitions. This time frame will enable us to plan and execute the exhibitions. When we have consolidated 2025s exhibitions we will send the program out to the membership. We have several sponsors on board now so more prizes will be available.

Please look out for our workshops each month which are always well worth attending, to learn and to meet with other artists. Workshops are always well attended and fun.

Wednesday studio is always a good day and this is where new and emerging artists are able to be mentored by established artists who give generously of their knowledge. We plan to have a second studio day each week as soon as the ‘wall’ comes down. The ‘wall’ is coming down the second week in July. We will then have extra space to accommodate our participants.

I am off on holidays for the rest of winter,  
So best wishes  
Shirley Pitt  
Acting President

## MEMBERSHIP REPORT

LYNDEL RAWLINGS

Members as of  
June 2024

139

Life Members

Students

New Members

9  
3  
4



EXHIB

ITIONS





# Exhibitions Report

We have successfully concluded the **Our City** exhibition, and I'd just like to say what a cracking exhibition it was. We had over 70 magnificent entries, with 276 visitors and 8 sales.

Prizes of \$1000 were awarded to Fred Fullerton, \$500 to Gerry Jensen and Brad Quinn was awarded the Peoples Choice Award of \$250 (kindly donated by the Launceston Art Centre).

We congratulate all the winners, and indeed all the artists for their great work.

Our raffle was very popular, with prizes being an artwork by Richard Klekociuk (pictured right) (won by Mary Jean Wilson), an art compendium donated by Pearts, and 2 tickets to see Kinky Boots, a show put on by Encore Theatre, who donated the tickets.

Our thanks go out to all our sponsors, we really appreciate their contributions to the arts in Launceston.

June Wilson was our featured artist, and her works on display contributed to the overall excellence of the exhibition.

Your exhibitions team has worked hard over the course of this year to improve our exhibition space, and Legacy has been most co-operative. We are hoping to get more hanging rails installed, and to streamline our processes so that we can continue to provide all our members with the opportunity and experience of submitting work for exhibitions.

Joanna Castle

Thank you to our sponsors



Raffle 1st Prize  
by Richard Klekociuk



Raffle 2nd Prize  
Pearts Variety Store



Raffle 3rd Prize  
Encore Theatre  
Company



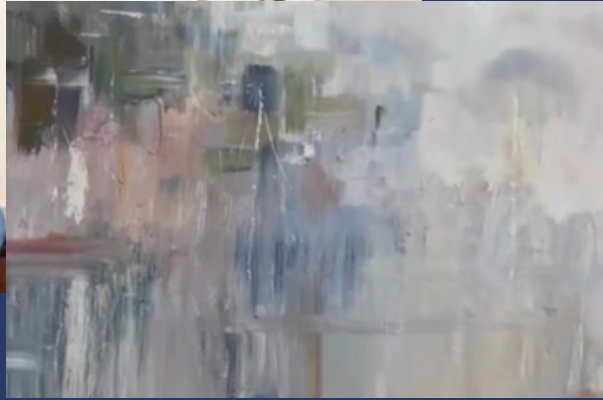


# Congratulations to our winners of 'Our City' Exhibition



## 1st Place

Fred Fullerton  
'Kanamaluka'



## 2nd Place

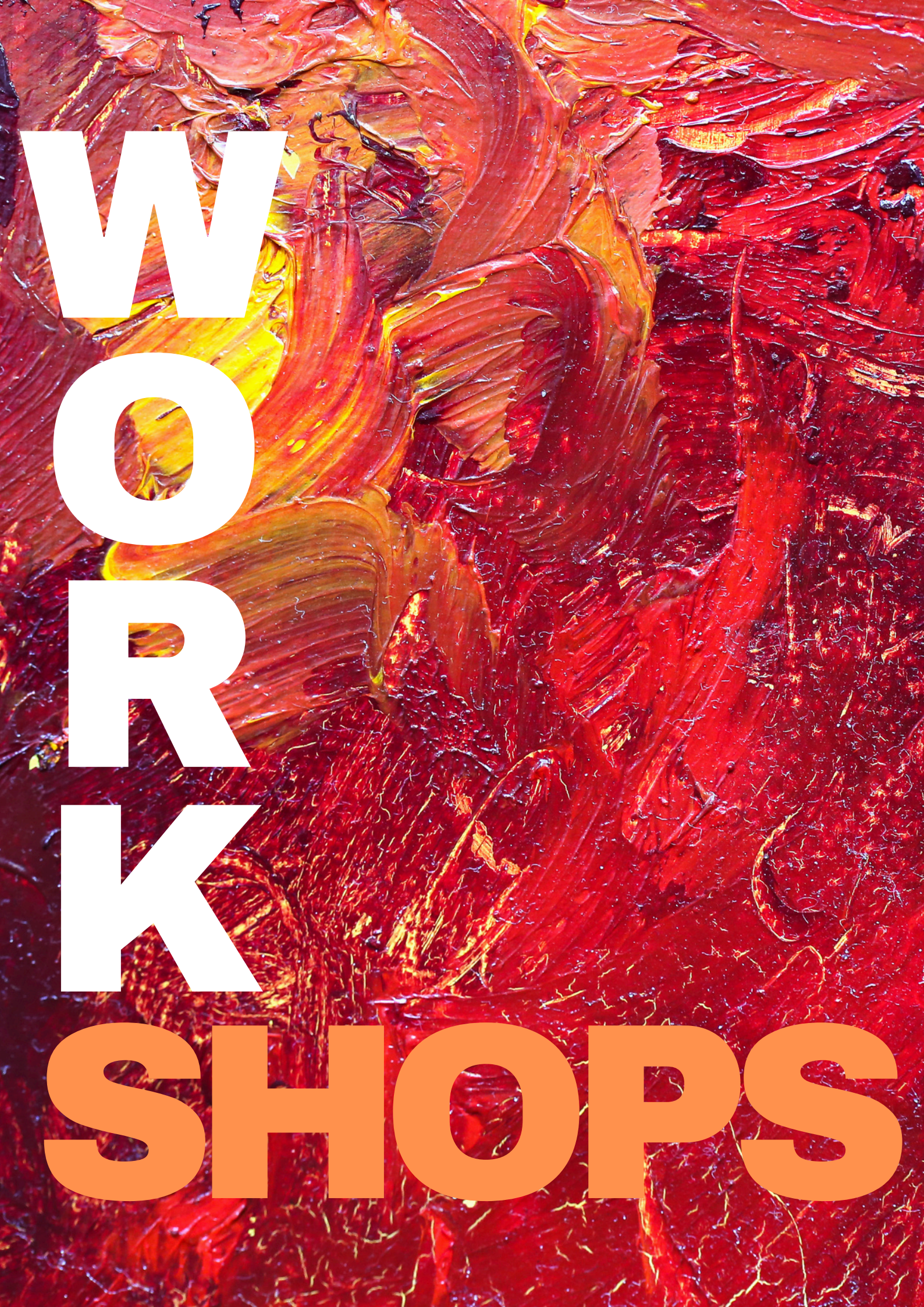
Gerry Jensen  
'Moored on the Tamar'



## People Choice Award

Brad Quinn, for his artwork 'Upper York Street'





**W  
O  
R  
K**

**SHOPS**



# Calendar for 2024

## LAS workshops & Early Bird Offer

Registrations are open for each workshop on the 1st of the month in which they are to be held.

### NEW EARLY BIRD INITIATIVE

Starting in July, LAS will trial offering participants a **\$20 discount** if they book and pay for the workshop four weeks before the event. We will also start purchasing some art materials with the aim of reducing the cost to workshop participants. We understand that the workshop material can become quite expensive. So, if there are materials that can easily be shared by all participants we will purchase some of these materials.

#### UPCOMING WORKSHOPS

**Saturday 27th July**

"Tear it up and Stick it Down" Collage with Jill Eastley

**Saturday 24th August**

"Little Birds" pastel workshop" with Julie Wickham

**Saturday 21st September**

"Exploring the Fluidity of Watercolour" with Darren Meader

**Saturday 19th October**

"Exploring Abstract techniques" acrylics with Pam Lockwood

**Saturday 16th November**

"Who do You Think You Really Are?" with Richard Klekocui

The LAS Committee is exploring the idea of running 4hr tasters for both LAS members and the community. If you have an area of your art that you would be keen to share with others, please drop Lyndel an email. This could be a great way to get new members, make new friends and to catch up with LAS members.

For further information regarding any of the above workshops please contact

**Workshop Coordinator:**

**Lyndel Rawlings: 0438 265 457 [lrawlings@y7mail.com](mailto:lrawlings@y7mail.com) or [lasinternetters@gmail.com](mailto:lasinternetters@gmail.com)**



# Collage



**Jill Eastley**

## ***Tear it up and stick it down***

*Collage pronounced KOL-AHZ  
from the French coller meaning to stick or glue.*

***In this workshop we will use a range of materials -  
paper, glue, fabric, pencils, marker pens, the list is very long.  
Please bring a sketch book or some scrap sheets of paper  
on which to try out some ideas.***

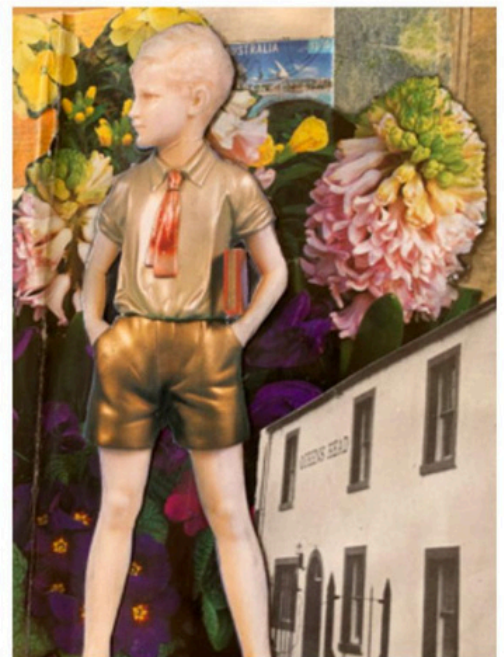
**Saturday 27th July,  
10am - 4pm**

*Materials to be supplied by LAS*

*2 small canvas boards per person*

*1 glue stick per person*

*A wide range of papers and images will be provided  
but please do bring along images, photos etc  
and your favourite materials as well.*



**Cost \$130.00 for members, \$150.00 for non-members**

To register please contact  
Lyndel Rawlings on 0438 265 457  
Email: [lrawlings@y7mail.com](mailto:lrawlings@y7mail.com)



# Little Birds Pastel Workshop with Julie Wickham

Date: 24th August

Time: 10am - 4pm

Aimed at all levels, join this workshop to paint a little bird or two on suede mat board. This workshop will focus on the "doing" vs the theory around art with participants learning how suede mat board is a great support for soft pastels allowing for precise but soft rendering of your chosen subject.

To ensure that all participants go home with a piece of work that is finished, or nearly completed, the workshop cost includes 2 pieces of suede mat board in a shade and tone that will suit almost any bird. Participants can paint a bird of their choice, or this image will be available for participants, so they can follow along with Julie as she paints a this wonderful male Superb Fairy-wren.

Cost: \$130 for members \$150 for non members  
Early bird price for members \$110 if paid by 24th July.

Registration: Lyndel Rawlings

[lrawlings@y7mail.com](mailto:lrawlings@y7mail.com)

0438265457



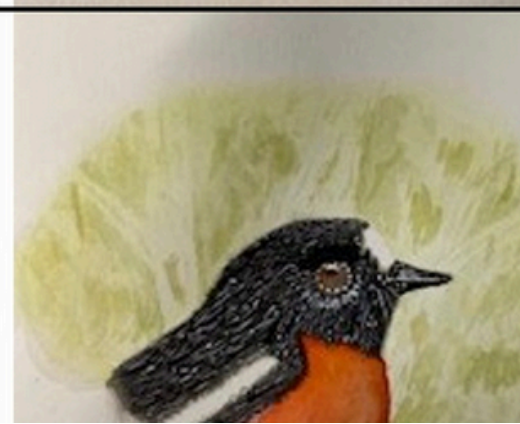
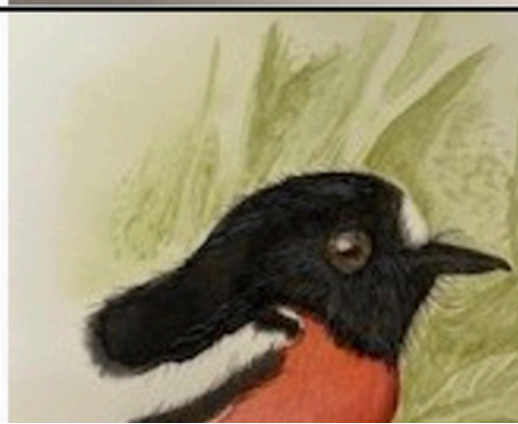
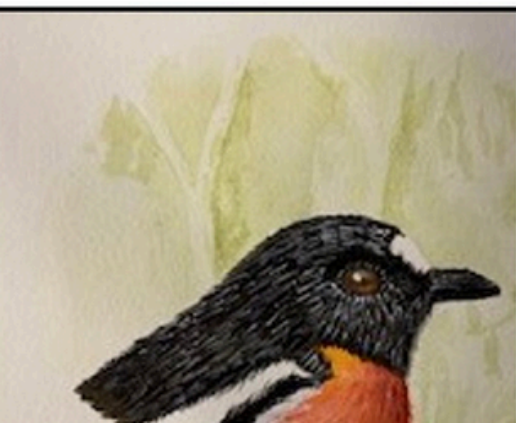
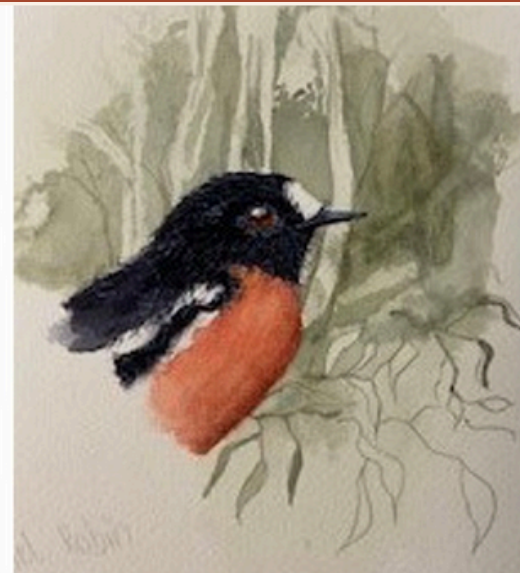


# Thank you to Robin Wingrave for sharing his knowledge

Self taught Australian artist Robin Wingrave shared his love of nature and his immense talent with us on Saturday the 22nd.

One of our guests commented that it was her first workshop and "What a fabulous experience, so much encouragement, fun and brilliant advice. So much to go and try!"

Everyone had a wonderful day and came away with some new skills and enthusiasm for a new medium.





# Thank you to Claire Holder for hosting an expressive portraits workshop

This workshop was described as both informative, relaxed workshop with participants unanimous in saying they enjoyed it immensely. An amazing day.

These are a few more of the comments from the workshop.

"Clare is not only a great artist but also an amazing teacher. She was able to demonstrate her skills in a manner that gave us all the confidence to have a go and succeed."

"Clare shared her knowledge not only about her favourite tools but also the theory and skills behind drawing expressive portraits. Then in the afternoon Imogen, our delightful model, posed as we attempted to draw her."







# SOCIAL ACTIVITIES



The background of the poster is a cubist painting, likely by Pablo Picasso, featuring a complex arrangement of geometric shapes, lines, and colors in shades of brown, green, and grey, creating a sense of depth and perspective.

**THE  
HISTORY  
OF ART**

**WED  
JUNE  
3**

# **CUBISM**

**JOIN  
THE  
DISCUSSION**

**1.30 - 2.30 pm  
LAUNCESTON RSL**

**Everyone is  
Welcome**






The Morning tea /Art market proved to be a lovely morning with a lovely number of members attending.

Many thanks to our committee members who brought along cakes and goodies - a very much appreciated donation





**A reminder to be part  
of our Wednesday  
painting group in the  
Launceston RSL studio**

A glass jar filled with various paintbrushes, sitting on a green surface next to a glass of brown liquid.

**A friendly &  
informal day  
10am - 3pm**



# LAS Committee Contacts

## EXECUTIVE POSITIONS

<b>President</b>	Position Vacant		
<b>Acting President</b>	Shirley Pitt	0459 980 721	shirleyj48@hotmail.com
<b>Vice President</b>	Mary Stary		lasinternetters@gmail.com
<b>Public Officer</b>	Shirley Pitt	0459 980 721	shirleyj48@hotmail.com
<b>Secretary</b>	Position Vacant		
<b>Treasurer</b>	Pat Cullen		lasinternetters@gmail.com

## PORTFOLIO POSITIONS

<b>Exhibitions Coordinator</b>			
Joanna Castle	0408 624 681		cherryblossomross@outlook.com
<b>Newsletter Editors</b>			
Gerry Jensen	0408 103 796		tangtoo@iprimus.com.au
Sandy Astill	0412 240 190		sandra.astill@bigpond.com
<b>Membership Officer</b>			
Lyndel Rawlings	0438 265 457		lrawlings@y7mail.com
<b>Publicity Officer</b>			
Monique Tehge	0404 237 621		monzziet@gmail.com
<b>Social Activities Officer</b>			
Shirley Pitt	0459 980 721		shirleyj48@hotmail.com
<b>Workshop Coordinator</b>			
Lyndel Rawlings	0438 265 457		lrawlings@y7mail.com

## COMMITTEE POSITIONS

Tess Way	0419 341 780	tessway@bigpond.com
----------	--------------	---------------------