



artbeat

The quarterly newsletter of the Launceston Art Society

JUNE 2013

Artists in Action day at Eskleigh

An outstanding success! If you missed it, ask someone who was there - everyone agreed. Story Page 5



Joseph Zbukvic had the crowds entertained



Tom Samek amazed everyone with his lightning speed and superb paintings

CONTENTS

2/5 Artists in Action Report
6/7 Members Memos
Presidents Palette
8/11 Workshops

12/13 Out & About and
Workshop Roundup
Holy Trinity
14/15 Exhibitions
16/17 Website revamp
LAS joins Facebook
Art Diary
ArtWorks
18/19 Members' News
20/21 Painting Dayz
LAS Committee



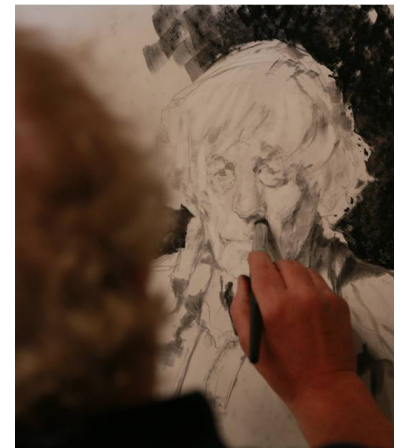
Michael McWilliams finishes some Smoked Salmon, while his Beef & Reef look on.



Cliff How explains the process of his oil and beeswax painting



Brian Mooney sits for Pieter Zaadstra and the result is shown below - WOW!



Ben Winwood gets some help from Bridget with his cartoons.



Caricatures with Lyn Stares - Sue was game to be a model

ADAYTO REMEMBER

*What a Day!
music, oils,
pastels, artists,
demos,
watercolour,
acrylic, portraits,
sketches, flowers,
street scenes,
landscapes
and sausages
WHEW!!!*



An opinion piece - Margaret Baker

How will we ever forget the wonderful LAS event -13 Artists in Action!
From go to whoa it was a winner. Carolyn Riley's excellent planning skills came into action in a big way and created an LAS event the likes of which I've never seen. Congratulations and thanks to Carolyn and all the committee members & their helpers for showing Launceston what Eskleigh as the home of the Launceston Art Society is all about.

A totally brilliant concept, totally brilliant organisation and the crowds of appreciative people were brilliant too! The highlights for me were many – from the friendly greeting at the front door to the cheerful goodbye when Junior Member Bridget & I went happily home.

Ben Winwood was really put to the challenge as Bridget took an instant shine to him and I just couldn't tear her away – they inspired each other and went from drawing to drawing with lots of laughter in between. Thank you Ben!

Tom Samek is my new hero! What a legend, along with Michael McWilliams, he makes humour in art look so easy. I didn't get much of a look at what Joseph was painting – the crowd in Room 1 was constant. Kay Chin had a huge crowd too, but I did learn that Purple makes a good shadow on yellow! Clifford showed everybody How and he also had a constant crowd and Lyn Stares' Caricatures were a hit too - so much talent in one venue!! Rosemary Hill and Margaret Coombes shone as did June Wilson and Mary Hudson who created another busy room of viewers and Jennifer Scott's 'make-it look- easy' strokes were magic. Pieter Zaadstra held people captive with his portrait work.

Then came Monday's Examiner with Michael McWilliams at Eskleigh starring on the front page and a full page 6 with great photos and well written article as well!!! How good is that???

More please!!

VALE PAUL MAYCOCK - A tribute to his time as a member & Secretary

Paul's many abilities as an artist were evident when he became a member of the LAS exhibiting with us at various exhibitions. He also had many solo exhibitions in which he had many loyal patrons who valued his art. His time as Secretary for the LAS was well used as he diligently prepared each newsletter with one of his delightful pencil sketches on the front page. Members looked forward to these every three months. The sketches were usually of historic buildings & landscapes. He also knew the constitution thoroughly which meant he kept the President (which happened to be me, in check). He gave generously the use of his large former home at Longford for one of our major exhibitions. He will be respectfully remembered by many members. Condolences to his family.

Eva Mehegan.

Members Memos



Louise Skabo
Membership Officer

The Committee and fellow members of Launceston Art Society Inc. extend a warm welcome to new members: Ms Leanne Stott of Devonport and Ms. Debbie Tiffin of Perth. We are looking forward to seeing your paintings and meeting you at one of our exhibition openings.

Memo 1 Renewal of Subscriptions 2013 Overdue

Now \$30 Renewal of Membership

Memo 2 To all Members - Changes at Eskleigh

Launceston Art Society Inc. has signed a new lease with the Eskleigh Foundation for 4 years. The only difference is that we have moved office and store room because Eskleigh staff wish to be all on the same floor upstairs. Our new store room is smaller (first turn right after the upstairs toilet) so **all Exhibiting Artists** please note there is now little room for painting storage. If you do not pick up after an Eskleigh Exhibition, due to limited space LAS cannot guarantee your painting will not be damaged.

The new office, where you record sales of paintings and cards is now conveniently located **downstairs** (first left when turning left after "signing in). The **key** to the storeroom and new office is in the same place in the kitchenette cupboard **but** there is also a new office key on the wall in the alcove opposite the downstairs toilet under the main stairs.

Some members who don't like the stairs have already expressed pleasure in our new office which contains our excellent little Library of Art, a heater and you can make a hot drink there while you read or work. The **studio** remains the same and tables will be left set up for you (heaters in this room also). At present the microwave is in the store-room but we are working on a more convenient set up.

Art with the Eskleigh Residents

Thanks to Beryl Pearn and Bruce Irwin who have volunteered to conduct some art sessions. Residents of Eskleigh Home love our visits on Monday 1.45 - 2.45pm so let me know if you can help for a few hours only a year. Remember we have a reciprocal agreement with Eskleigh Foundation and art with the residents is an LAS obligation - albeit a very agreeable one.

Enjoy painting - Louise Skabo Membership Officer

Presidents Palette

Those of you who know me will have realised that forward planning is not one of my strengths. At LAS committee meetings I receive help, usually in the form of tactful questions such as "Had you remembered?" or "Would it be a good idea to?" or sometimes the more direct "We need to send it now!" when I am really late. When it comes to exhibitions however, Lynne and I depend on our members for help and, I don't like to say this, but with our current exhibition Favourites, you failed us badly. We received a very small number of entries by the due date, some people phoned which was very helpful, some people just turned up with their work and some from their friends and a couple of works were even hung days after the exhibition had opened. The holiday is over, we are back at Eskleigh and it's business as usual. I don't believe you could all have lost your copy of Art Beat.

Recently Lynne and I delivered paintings to the Lady Franklin Gallery to be shown in The Art Society of Tasmania's Tasmanian Views exhibition. We very much enjoyed the exhibition, finishing that day, which focused on Mt Wellington. The different approaches the artists had taken to the subject made the exhibition varied and interesting. Once I got over being envious-again-because Hobart has Mt. Wellington (and the Derwent River and Nutgrove Beach) I decided we in the North are not really deprived. We have a choice of mountains all around and we have The Gorge. I still remember our younger son asking me-in the car I suppose-if I always looked up The Gorge as I drove into town and when I thought about it I realised that I did, even in the dark, and I still do. How would I paint what I have spent a lot of time observing? Could we borrow a good idea from the AST and use it in our own way? Could we have a complete exhibition at Eskleigh of your views of The Gorge? (Should I concentrate more on my driving and less on looking? Possibly!)

The Lady Franklin Gallery is not on a major road and is fifteen minutes from Hobart's CBD so no doubt the AST members have and continue to work towards making the community aware of how pleasant it is to visit their gallery. Committee member Carolyn Riley's Artists in Action day has been a mammoth task for her to organise but what a marvellous way to encourage people to visit our gallery. How fortunate we are that such a diverse group of artists were prepared to give their time to demonstrate their unique ways of working. The whole day was an outstanding success! Well done Carolyn and thank you.

I hope you are inspired by what you saw, can postpone your plans to go into hibernation , renew your supply of entry forms and make a plan which involves painting the Gorge quite soon.



Carlene Bullock
President



With Carolyn Riley

Portraiture in Inks & Acrylics With De Gillett

Monday 17th & Tuesday 18th June - Cost \$200
For those who wish to learn something totally new and exciting in acrylic mediums.

This process is the latest development with inking with which De has been working for the last 10 years. If you have done an Inks Workshop with De before, you are well placed to develop it further in this workshop. If you are a newcomer to working with inks, however, you are not at any disadvantage, as all the steps are simple, if a little surprising!

These painting techniques can also be easily adapted to working with other methods using acrylic or oil paints.

This series of photographs shows the development of De's self portrait in inks titled: "Discovering the Fauve within". In this two day workshop, all the techniques used in the production of this work will be taught. We will learn simple methods for the accurate construction of the head. We will then choose colours to build an interesting background with spattering. We will be building the planes of the head with palette knife techniques. Finally glazing with inks, unifies the painting and develops the colours to a breathtakingly original conclusion.



Inking Fundamentals

With De Gillett

De is returning to Tasmania by popular demand!

This 3-day workshop covers De's self developed techniques with inks and textures to create beautiful vibrant paintings. No drawing skill is necessary to succeed with wild and wonderful inks. Create a textured and collaged surface before flooding it with inks to create a wet-in-wet result that goes beyond your wildest expectations. Suitable for beginners and experienced artist alike - each artist can expect to complete two or three canvases during the workshop.

Where Greg & Gill Waddle's Studio 35 Collins Street Evandale

When: 13th, 14th & 15th June 2013

Cost \$275 (includes large range of inks, impasto gels, texture pastes, extenders, cleaners and other materials)

Payment on registration due: Friday May 31st 2013

Maximum: 12 participants

Morning and afternoon tea provided, BYO lunch.

Please advise of any food intolerances.

Further information available on enquiry or registration: ie canvas sizes, requirements not included in materials supplied on the day etc.

Suggestions for materials for creating interesting textures:

This technique depends on building a textured surface first, then dropping inks into that and allowing them to mingle and respond, so bring along any fabrics, yarn, laces, doilies etc that you might want to glue down. Nothing thicker than around 3mm and nothing too heavy like stones. Shells and bits of coral are fine and look great if you want to do a reef/beach piece. Even a single thread will show up, so think outside the square and consider all kinds of possible options. Netting from onion bags works well.

You are not limited to gluing, as you can also build your textured surface using texture paste. Lines are piped to contain the coloured inks - you must think of them as dam walls and build them strong and without any holes for the inks to find!

Go to Launceston Art Society Inc Face Book and check out the work that was produced by our own artists during De's last visit.

Contact details: Carolyn

P (03) 6328 1697 M 0418 281 697

E carayne@bigpond.com

more pics over page...



Workshops 2013

At a recent inks workshop in Brisbane, talented young participant Grace created this incredible 100x100cm image of an eagle in flight - you can see it evolving here from the all-white textured base layer to the final piece in all its feathered glory!



Kay Chin Botanical Artist

Kay will be tutoring an LAS weekend workshop July 20 - 21 2013

Kay is a botanical artist living at Forcett in Tasmania. She has studied Botanical Art at the Royal Botanical Gardens, Sydney and is a graduate of the Society of Botanical Artists Great Britain. Kay is also a member of the Botanical Art Society of Australia.

Cost: \$160 includes morning and afternoon tea. BYO lunch.

Kay's work can be viewed online: www.kaychin.co.uk
Payment is required by Monday, 8th July.
Details are shown below.

ENQUIRIES & TO CONFIRM PLACE

Contact Workshop Coordinator Carolyn Riley
H 6328 1697 M 0418 281 697
E carayne@bigpond.com

PAYMENTS TO:

The Treasurer
Launceston Art Society
PO Box 1476
Launceston 7250

OR

Netbank Deposit
BSB: 067003
ACC: 28016820
Launceston Art Society

Remember to include your name & an abbreviated description of your deposit eg: A Painter JM w'shop.



UPCOMING WORKSHOPS.....

August 3 / Scott Wilmot Bennett www.wilmotbennett.com

October 19-20 / Pieter Zaadstra www.zaadstra.com.au

KEEP YOUR EYES PEELED!!

50

ANDABOUT

BUS TRIP- Tasmanian Museum and Art Gallery

Leaving Jacks Bus Depot at Longford no later than 8.00am Thursday 27th June and head to Hobart for what should be a full and interesting day. Starting with a guided tour of the Tasmanian Art Gallery and Museum, then to the Theatre Royal for what should be a very interesting one hour tour. On to Mona we go and to view some of its controversial and ever changing works of Art.

There is a small donation cost of \$5 to the Tasmanian Museum and \$10 per head for the Theatre Royal. The cost of the bus will be \$38.00, so all up cost of \$53.00.

It should be a fun day so could you please indicate your interest as soon as possible by the 14th June.

Enquiries and details please call John on 63348239

WORKSHOPROUNDUP

Jenny MacNaughton Workshop

I first became aware of Jenny's approach to watercolour, after reading an article in Australian Artist some time ago. Therefore when Jenny's Workshop appeared in Art Beat, I saw this as a great opportunity.

Attending workshops can sometimes be a little daunting. However Jenny's talent, enthusiasm and energy became infectious and we were all very quickly transported out of our comfort zones, even to being reminded now and then to breathe!

Jenny demonstrated interesting landscape subjects including buildings in the landscape, a coastal seascape, an Iris from her garden (very challenging) and a hidden cottage and garden.

Using her demonstrated techniques we were able to put paint to paper and produce some pleasing results. During the two days of the workshop, Jenny demonstrated planning and positioning subjects onto paper, using minimal choices of colour on our palettes (3- 5 colours), positive and negative spaces, avoiding detail and introducing shadows into our paintings.

Although there seemed little time for breaks, we did manage to enjoy Gill's hospitality and sumptuous morning and afternoon teas. A big thank you too, must go to Carolyn for giving us the opportunity to experience the passion and talent of this artist.

Reporter **Sue Glover**

Opening of Holy Trinity Exhibition

The Launceston Art Society Inc.

in conjunction with

The Holy Trinity Church

cordially invite all members of the Launceston Art Society Inc.

to attend the Official Opening of the

2013 "Celebrating Life" art exhibition

to be held at the Holy Trinity Church,

34 Cameron Street, Launceston

Friday, 2 August at 6:30 pm to 9 pm.

COST \$20 per person, includes delicious canapés, wine or other beverages and a free ticket for a great Lucky Door Prize.

Proceeds for Holy Trinity Congregation.

RSVP essential for catering by Friday 26 July

PHONE Dorothy Potter 6340 1953 or Lynne Hutchins 6330 1943

The CAPITAL Chemist \$1000 Art Award, The Greg Waddle Memorial Prize, Student Prizes & the CAPITAL Chemist Calendar artists will be announced on this night.

From past experience the majority of paintings are sold on the Opening Night, so members should make a big effort to invite an art loving/buying friend to the Opening or to visit during the following week. It is up to the membership to help facilitate sales.

Exhibitions

The Launceston Art Society in conjunction with
The Holy Trinity Church presents

“Celebrating Life 2013”

Saturday August 3rd to Friday August 16th

PRIZES

* **\$1000 CAPITAL Chemist Art Award**

* **LAS Greg Waddle Memorial Prize**

* **The Holy Trinity Religious Acquisitive Art Award**

(sponsored by Holy Trinity.)

The work need not be a painting but could be a hanging or an item suitable for display in the church which is considered to enhance or demonstrate an understanding of the Christian faith.)

* **Peoples' Choice Award**

* **Junior Members Awards**

* **Selection for CAPITAL Chemist Calendar 2014**

Closing Date Friday 19th July.

Entry Forms on web or ring Carlene. Fees due with Entry;
TWO paintings; PLEASE enter by due date and read
Conditions of Entry !

Delivery of works Tuesday, 30 July 1:30 to 3pm ONLY.

DO NOT LEAVE YOUR WORK AT THE CHURCH PRIOR TO THIS
TIME. If this delivery time is not possible for you please phone
Carlene 63273799 or Lynne 63301943 and make other
arrangements. We prefer to see you to check details and
pass on other information.

Collection of Unsold Art Friday 16 August 3.30 to 4:30pm

*Sitters Essential for Holy Trinity By popular demand extended to
2 weeks so 50 sitters required! Please set aside just one morning or
afternoon to help sell your & fellow member's work!
SUNDAY 4 AUGUST SPECIAL SERVICE for ARTISTS
Support HT & attend 10:30 am Religious Prize given.*

Exhibition open daily 10-4 except Sundays 1-4.



*REMINDER: An entry form received by due date is essential
for all exhibitions to assist with preparations.*

FAVOURITES

Collection of work: Monday, 10th June or Tuesday, 11th June
between 9am & 1pm

UPSTAIRS, DOWNSTAIRS

Six rooms, a different artist or group in each. See the work which was
exhibited in the Lady Franklin Gallery in Tasmanian Views plus
Darren Meader, Sandra Petersen and MORE!

OPENING: Sunday 16th June at 2.00 pm.

Bring a friend and join us.

Exhibition closes Sunday, 21st July.

CAST

Join members of the Art Society of Tasmania, the Burnie Coastal Art Group
and the Meander Valley Art Society in this exhibition.

1 or 2 pieces may be entered.

Entries close: Friday, 12th July

Delivery of work: Monday, 22nd July between 9 am & 12 noon

Official Opening - Sunday, 28th July at 11.00am

Enjoy a Soup & Sandwich lunch with visiting artists.

Exhibition closes: Sunday, 8th September

Collection of work: Monday, 9th September, 9 am - 12 noon

SEPTEMBER/OCTOBER **A Group Effort**

OCTOBER/NOVEMBER **Solo Exhibition by Rachel Howell**

DECEMBER/JANUARY **How do you see the Gorge?**

*Often referred to as a world class attraction, how much notice
do we really take? Have another look and start planning your
painting now before the Christmas rush.*

FEBRUARY/MARCH **Triple A**

MEANDERING - Scheduled for November; *more details next Art Beat.*

Website revamp

As part of continuing improvements being made to the LAS web site, it is felt that now is an appropriate time to update the featured artist's galleries. If you currently have images online with us you may like to consider changing or adding to them. Also, you might like to change your blurb! If you aren't on our website - why ever not? Free advertising is hard to come by.

Please send pic files (re-sized for web) to Pauline Winwood, win_elec@bigpond.net.au and updated blurbs in word.doc file format.

LAS JOINS FACEBOOK!

For those of you who are on Facebook, please search for 'Launceston Art Society Inc' and like our page.

We are using it to promote our exhibitions, workshops, events etc. and it would be wonderful if you could 'share' and 'comment' and 'like' our updates so that we reach a wider audience.

Spread the word and ask your Facebook friends to 'like' us too. *You know what to do Click the button!*



ArtDiary

Three months at a glance

JUNE

- 10/11 Collect work from 'Favourites'
- 14 RSVP for Bus Trip to Tas Art Gallery and Mona
- 16 Opening for Upstairs/Downstairs 2.00pm
- 13/15 De Gillett Workshop - Inking Fundamentals
- 17/18 De Gillett Workshop - Portraits in Ink and Acrylic
- 27 Bus Trip to Tas Art Gallery and Mona

JULY

- 12 Entries due for CAST
- 22 Deliver work for CAST
- 19 Entries due for Holy Trinity
- 20/21 Kay Chin Workshop - Botanical Art
- 28 Opening of CAST 11.00am
- 30 Deliver work for Holy Trinity

AUGUST

- 2 Opening Night - Holy Trinity Exhibition
- 3 Scott Bennett Workshop

ArtWorks

Wanted for *Minds do Matter* Art Exhibition

This exhibition explores the relationship between art and well-being.

The exhibition is on the 4th-13th of October at The Mill Providore, Bridge Rd, Launceston.

Entry forms must be submitted by the 30th of August.

For more information call Aspire on 63333111 or www.aspire.org.au/events

Contributions and letters are welcome; Email to win_elec@bigpond.net.au or post to PO Box 3039 Launceston. If hand written, print clearly please. When submitting articles via email, it is preferable that these be in Word.doc format.

Original text may be reprinted, unless otherwise indicated, provided an acknowledgment of the source is given.

Permission to reprint non original material must be obtained from the copyright holder. Views and opinions expressed in articles are those of the author and not necessarily the views/opinions of the Society.

MembersNEWS



Darren Meader & Bronwyn Walkem

Present works in watercolour, acrylic, oil & prints at

‘DECADE’

Tin Shed Pottery

Ten Year Anniversary Exhibition

Mill Providore Gallery - June 8 to July 2

CONGRATULATIONS to the following members for their success at the Ross *Painting the Town Exhibition*

Ray Pethick - Highly Commended

Rachel Howell - People's Choice Award

The exhibition continues until the end of July.

CONGRATULATIONS to Annabel Johnson for winning the U/14 Art Prize of \$100 in the annual *Bay of Fires Art Prize*.

Well done Annabel!

Also to Jacki Murphy. Her entry in the Bay of Fires Art Award made the Salon de Refuses list. Only 30 of the 187 entries are accepted as finalists - so making the next cut is quite an achievement.



Merchandise**FOR**SALE

To: All Eskleigh Rostered Duty participants and members displaying/wishing to display merchandise for sale at Eskleigh:

From: Committee

There is now a new system of accounting for sales.

Each item has a “removable sticker” attached containing name of artist and price of item on sale.

This must be removed and placed on the appropriate date page in the Merchandising Diary specially prepared for this purpose and residing in the office. Please ensure this is done to enable correct reconciliation and payment to selling artist.

It is the responsibility of all those displaying items for sale to ensure a removable sticker with name and price, is attached.

Notes from the Treasurer

Members are now able to pay membership/workshop fees by direct deposit (internet banking) in addition to cash or cheque. The following is the information required to be submitted.

BSB 067003

Society Account # 28016820 (Launceston Art Society)

Amount

Plus Your **Name** and an abbreviation Code describing the reason for the deposit ie, **M/ship, W/shop, Xmas Fnct, Hang_Fee, Heating** etc

Note: It is extremely important that your *name* is included in the transfer information for traceability reasons, in particular *new members* should *still* fill out a membership application form and forward to Society

George Green

The Eskleigh Painters

Join the "soon to be famous" painting group at the new home of the Launceston Art Society !

Mondays 10am to 3:30pm (except during March & April)

Come for as long as you like during these hours

Cost: Gold coin donation

Bring your own lunch

Tea, coffee & biscuits provided

Plus LAS Reference Library & music

Contact Philippa Hirst 6344 4510

Northern Watercolourists

Meets every Wednesday (weather permitting)

/for En Plein Air painting.

Location Various by group consensus

Time 10:30-11.00 meeting time (seasonal) until as late as one wants.

Cost Own (transport)

Contacts

Carlene Bullock 63273799

George Green 63314787

Robyn Dixon 63444280

LASLAD

Launceston Art Society Life Arts Drawing

Tutor Chris Beck (Dip.T.Art/History) who has experience as a high school teacher and private Art Tutor.

Phone: 63978275 Mob: 0437917802

Email: ecclesia@bigpond.com

Cost \$15 per session with long term discounts negotiable.

Group meets at 99 Elphin Road every other Friday evening, 7.30-9.30

Work is available for female and male life models.

For session times for 2013 and any further information please call Chris.

LAS Committee 2013

President

Carlene Bullock 6327 3799 carlene.bullock@gmail.com

Vice President

Carolyn Riley 6328 1697 carayne@bigpond.com

Secretary

Carol Hole 6330 3676 clhole1@bigpond.com

Treasurer

George Green 6331 4787

W'shop Coordinator

Carolyn Riley 6328 1697 carayne@bigpond.com

Ass't W'shop Coordinator

Eva Mehegan 6327 2320

Exhibitions Coordinator

Carlene Bullock 6327 3799 carlene.bullock@gmail.com

Ass't Exhibitions Coordinator

Lynne Hutchins 6330 1943 brucenlneutchins@bigpond.com

Art Beat Editor/Website

Pauline Winwood 6334 7454 win_elec@bigpond.net.com

Publicity

Louise Skabo 6334 6787 rlaskabo@gmail.com

Excursions Officer

John Doyle 6344 8239 johndoyle@westnet.com.au

Committee Members

Aileen Gough 6398 1187

Alison Wallace 6334 7303 rwallace@microtech.com.au

Shirley Pitt 6331 2399 shirleyj48@hotmail.com

Andrea Robins 6398 2538 e881111@ozemail.com.au

Non Committee Members

Denise Flanagan 0417 862 620 deniseflanagan6@gmail.com

Margaret Baker 6331 4441 johnbaker1@primus.com.au

Ray Pethick 6391 5762 info@raypethick.com.au

Website www.artlas.org.au

Advertising Rates Per issue in artbeat

Quarter Page \$13.00 / Half page \$25.00 / Full page \$50.00

A 5% discount is still given to advertisers who place four consecutive insertions of the same advertisement paid in advance and 10% to financial members.

Payments to: The Treasurer, LAS, PO Box 1476, Launceston, TAS 7250



Mr Harvey Cuthill
Patron

We hope you like the 'new look' Art Beat.
Thanks to Ray Pethick for all the graphics work - pretty schmick, Ray!
Ed.



B.Ed.A.P.D. Fine Arts
Registered Teacher

Art Classes for Adults
Mondays and Wednesdays
6.30 – 8.30pm flexi times
6326 3609
me@sandrapetersen.net

simple art language

of lines, shapes, colours, directions,
sizes for personal expression

demonstrated techniques for
drawing, painting, sculpting. designs

subjects animals, sea creatures, birds, people,
landscapes, seascapes, buildings, faces

- * **beginners for fun**
 - * **serious art students**
- catered for in appropriate
groups or private tuition

4 week tuition blocks each month
of specific topics and techniques
\$80 for 4 X 2 hour lessons payable
in advance

Private one to one tuition available

spider web design and build



*Affordable web site design and maintenance.
Domain name registration and web site hosting organised.
Conversion of web artwork into print ready material.*

www.spiderwebdesignandbuild.com.au
michael@spiderwebdesignandbuild.com.au

Michael Bok ☎ 0417368165 or 63315549



GREG AND GILL'S PLACE

SELF-CONTAINED HOLIDAY ACCOMMODATION

Full breakfast provisions,
including home made bread, jams & bottled fruit
Secluded corner of historic Evandale,
Peaceful garden setting, rural views to Western Tiers
35 Collins Street, Evandale
Phone: 6391 8248



helping you see things differently

logo / brand design
website design
booklet / brochure design
packaging / advertising and promotional design
exhibition / signage design

ray pethick 0418 581 783 or 6391 5762
info@raypethick.com.au
www.raypethick.com.au

FRAMESAVERS GALLERY AND FRAMING

218 Wellington Street
(Just down from the Cheesecake Shop)
Monday - Friday 10am - 5pm or by appointment
Save Big Dollars on Framing

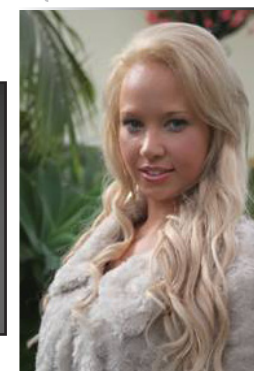
Starving Artists Special

1/2 sheet watercolour and pastel frames
Image size 510 x 340mm / Overall size 690 x 530mm
Quality timber mouldings with acid free mats and backing
Ready to hang - incredible value at \$59.00 while stocks last

Check out our sample frames at
www.framesavers.com.au
Best Value Framing Guaranteed

PHONE 6344 7092

Pauline Winwood
PHOTOGRAPHY
& ART
"through artistic eyes"



Phone 0407 552 578

Email: pjwinwoodphotography@hotmail.com

Web: www.paulinewinwoodphotography.com.au

DrawingfromLife

Enjoy a days drawing in a professional studio environment under expert tuition. All drawing materials, model and light refreshments provided.

Classes held weekly,
Wednesdays & Thursdays
3 Hour Session \$50.00 inclusive

Epping Studios
13548 Midland Highway
Epping Forest

Call Ray Pethick 0418 581 783
or email info@raypethick.com.au
www.raypethickartist.net

As class sizes are limited, bookings are essential



INTRODUCTORY
GIFT VOUCHERS
FOR 2 SESSIONS
\$100



PHILCAM



Specialising in Art Supplies and Service for
Students to Masters.

**Matisse, Winsor & Newton, Holbein, Art Spectrum,
Fragonard, Arches, Fabriano, Canson, Cretacolor,
Pro Arte, Neef, Fredrex, Rembrandt
and Many Other Brands.**

**Complete Framing Service.
Conservation, Museum and Specialty Framing.**

DIY Framing Supplies. Framing Equipment, Moulding.

Matt Boards, Foam Core, Wire, Tapes etc.

**Hanging Systems.
Archival Storage Systems and Materials.**

**57 Invermay Road, Inveresk, Tasmania, 7248
Phone: (03) 6334 7775 Fax (03) 6334 4450**



Come upstairs & browse our extensive range of art materials.
Our friendly, expert, staff will help you with all your art needs.



*all things
to art people*

While you are in store join our Art Club...
members receive points on most items storewide*
which can then be redeemed on any art products.

*Excludes recharge vouchers, newspapers and stamps.

The Mall, Launceston
Phone 03 6331 3011 flehman@birchalls.com.au

If undeliverable return to

THE LAUNCESTON ART SOCIETY INC.
PO Box 1476, LAUNCESTON 7250.

PRINT POST APPROVED

PRINT
POST
PP1000002789

POSTAGE
PAID
AUSTRALIA