

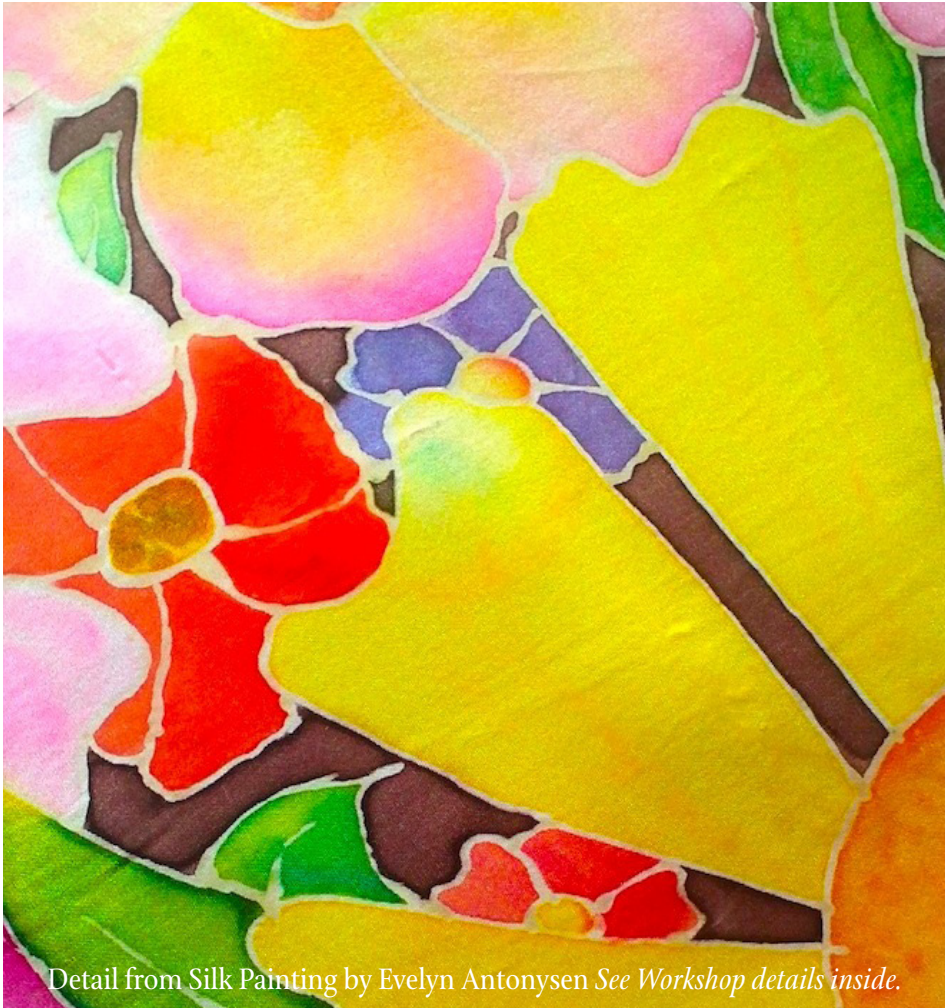


# artbeat

The quarterly newsletter of the Launceston Art Society

MARCH 2014

## Silk Painting



Detail from Silk Painting by Evelyn Antonysen See Workshop details inside.



- 2 Life Membership
- 3 President's AR
- 4 Members Memos
- 5 Presidents Palette
- 6/14 Workshops 2014
- 15 Exhibitions
- 16/17 Members News
- 18 Glover lover's afternoon tea

## Life Membership Award



### Margaret Baker gets life!

At the recent Annual General Meeting, Life Membership was bestowed on one of our past Presidents, Margaret (Margaux) Baker.

Margaret was visibly moved when she was presented with her certificate and a beautiful bouquet of flowers.

Carlene addressed the meeting and amused and informed the gathering with some of Margaret's many accomplishments. Given all the time and effort she has put in on behalf of the Launceston Art Society, it is indeed a very well deserved achievement – congratulations and well done, Margaret.

## President's Annual Report

Presented by  
Carlene Bullock at AGM



At the beginning of 2013 I was concerned at the effect the economic circumstances may have had on the LAS, but I think my fears were unnecessary. The LAS may not exactly have gone ahead in leaps and bounds but we continue to have a very healthy membership, our income is considered acceptable by George, our very capable treasurer, we have organized as many exhibitions as usual and have enjoyed the support of members in our volunteer activities.

We did reap the benefit of increased sales and visitor numbers by extending the length of our Celebrating Life exhibition at Holy Trinity and, months later, we are still benefitting from the increased exposure generated by Carolyn's Artists in Action. In fact Carolyn may have started a whole new art movement as a similar event, organized by Karolina Smith, is happening in Longford later this month.

The committee has devoted a lot of time and energy to considering all matters that are raised at meetings and I would like to thank them for their efforts. I must also thank Alison Wallace for her time on the committee and wish her well in her new home. We also depend on you, our members, for your suggestions to ensure that we continue to try new things; don't become complacent or accepting of what has happened before. Our traditions are important but we can always form new ones. With a new lease holder at Entally no doubt our enjoyable times of showing there will come to an end.

2014 will be different again and even though our plans are a little uncertain, I'm sure we will rise to the challenge.





**Louise Skabo**  
Membership Officer

## Members Memos

The Committee and fellow members of Launceston Art Society Inc. extend a warm welcome to new members Merlene Pozzi, Lisa Coppe, Carol Cowley, Annette Evans and Annette Tyson. We welcome three new committee members for 2014: Diana Lord, Richard Klekociuk and Rachel Howell. Diana will be your new Membership Officer from March and Richard your new Publicity and Marketing Officer.

**MEMO 1** The next 'Eskleigh Gallery' Roster will be out in May 2014 ready for the reopening of ESKLEIGH GALLERY after the new roof on the historic home is completed. We expect to be able to hold our next exhibition by July at the latest, so that roster will cover July through to September. If you will be travelling interstate or overseas during this time, please let me know. Most members who were on the cancelled February – March roster will be rescheduled for July- August.

**MEMO 2** Subscriptions for Launceston Art Society Membership 2014 were due on 1 January Please note:-

1) Subscriptions were increased at the 2013 AGM and that ALL RENEWALS of full membership will be \$30.

You can pay this via Netbank Deposit

BSB: 067003

ACC: 28016820

OR by cheque to

The Treasurer, PO Box 1476, Launceston 7250,

OR by cash to George Green the Treasurer or to another Committee member.

Please fill in a Renewal Application Form available online – [www.artlas.org.au](http://www.artlas.org.au). Please note – subscriptions paid after 1st April will be \$35.

2) You will not receive a hard copy of June ART BEAT if you are not a financial member.

**MEMO 3** ESKLEIGH ART SESSIONS with the RESIDENTS:

Thanks to Judy Brodribb who did an art session in February and has agreed to do a month later in the year. We need some new blood for art with the residents so please give me an email or phone Louise 0419 399 041 if you can do just a few hours this year – any month.

It is held at Eskleigh on Mondays after lunch for an hour but this is negotiable if another day suits. Our artists come up with wonderful ideas and the 6 or 7 Eskleigh residents who attend just love doing drawing, painting or craft work with our artists. NO ART TRAINING NECESSARY.

**Louise Skabo** /Retiring Membership Officer

2014 and I'm still here! Fortunately most of last year's committee is too and we will be joined by Rachel Howell, Richard Klekociuk and Diana Lord. Former committee member, Karolina Smith has volunteered to be available for sub-committees when required.

LAS members are welcome at committee meetings which are held at Eskleigh on the third Monday of the month at 2 pm. Any concerns or suggestions you may have would be welcomed, in writing, by the committee.

2014 is not going to be quite as we had anticipated. We will be able to enjoy long service leave while Eskleigh is re-roofed, but will have longer to produce our paintings for the exhibitions that we do hold there. Carolyn's workshops will still be happening, John has been researching new destinations for bus trips and the Monday Painters and the Northern Watercolourists are always looking for new blood.

Do any members of your family share your interest in art? My husband and our daughter enjoy harness horse racing and our two boys are petrol heads and whilst they are helpful to me they do consider the time I spend on art activities a little strange and quite possibly a waste of time. This weekend my husband was dragged through the doorway of the swab box by one of his horses. Blackie fitted but my husband didn't so he is wearing a large dressing like an ear muff on one side of his face. (Fortunately our daughter is a nurse.)

Should I point out that no member of the LAS has to be drug tested? Even though Louise guides us in choosing quite respectable wines, we do not send our guests home from exhibition openings in a state of intoxication I'm sure.

Today was shoeing day – the horses have new shoes regularly, not just the girls either – so a nail in the hand, not the hoof and more disinfectant and more dressings. Should I remind anyone that the worst that ever happens to me when I am painting is sunburn or an insect bite? No-one has ever been stabbed by their own paint brush and drinking your tea after your paint brush has been dipped in it is not harmful.

Our sons, when they test their driving skills on the race track, always seem to need to repair various dents and replace parts and they are always looking for ways to improve their car's performance. While out painting I have never totally bogged the car or been completely lost and those little scratches from low branches aren't really obvious. I do admit to ruining lots of sheets of paper but paper is more easily sourced than car parts though I guess, like the boys, I am always hoping for an improved painting performance so maybe we do have the same aims, just a different way of achieving them.

I hope that 2014 is a year when you achieve a lot of your aims. As I am frightened of horses and not capable of driving at speed I will stick to painting, my husband and our daughter can support art financially but I hope that eventually our boys will park their cars and renew their interest in art.

**Carlene Bullock** /President



**Carlene Bullock**  
President

## Presidents Palette





**Carolyn Riley**  
Presents

Workshops 2014

# AMANDA HYATT

June 14th & 15th 2014

Launceston Art Society Inc welcomes

Master Painter & Professional Tutor  
Amanda Hyatt

- Amanda captures the emotion and the moment, rather than the detail and is a master at developing the magic of light in the watercolour medium.
- She lives in Victoria but is constantly on the move, taking painting groups to Europe, between tutoring all over mainland Australia.
- Visit *you tube* to watch Amanda in action.
- Her workshop here in Launceston is already almost sold out.
- To participate in Amanda's workshop, students do need basic drawing skills and some experience in the medium.

This Watercolour Workshop will be held at  
Gill & Peter Waddle's Studio  
35 Collins Street EVANDALE

**Date** Saturday 14th & Sunday 15th June 2014

**Time** 9.00 am - Set up work stations ready for 9.30 am start.  
3.30 pm - Reflection before conclusion at 4.00 pm.

**Cost** \$195 – Morning and Afternoon Tea included daily  
(Please advise coordinator of any special dietary needs).  
Tea and Coffee provided. BYO own lunch daily

On Saturday evening, participants are invited to join Amanda, at the Clarendon Arms, Evandale for a counter meal.  
See instructions opposite if you would like to confirm your place in this workshop  
PLEASE USE [carayne@bigpond.com](mailto:carayne@bigpond.com) as email contact.

Make Your Payment by Friday 30th May to the Treasurer

# WATERCOLOUR WORKSHOP



## Steps for lodging your application for placement

### 1 Post cheque or money order to:

The Treasurer George Green  
Launceston Art Society  
PO Box 1476  
Launceston 7250

OR Netbank Deposit

BSB: 067003

ACC: 28016820

Launceston Art Society

(PLEASE remember to include your name and an abbreviated description of deposit – eg: Hyatt w'shop)

### 2 As soon as you have made your payment, advise Carolyn Riley that you have paid or you might miss out!

Phone 6328 1697

Mobile 0418 281 697

Email: [carayne@bigpond.com](mailto:carayne@bigpond.com)



# En Plein Air



## A Workshop with Clifford How

Friday & Saturday 5th and 6th September 2014

**Medium:** Students' individual choice

**Cost** \$120

Watch out for more details on our website, on Face Book and in the June edition of Art Beat.  
"Simplification through Massing" - for a stronger composition.

We will be working en plein air (weather permitting) looking at the landscape in a whole new way. Then we will bring the "studies" back indoors and producing studio works from them. By doing this, we will aim to edit and strengthen our image for a simpler, stronger composition.

<http://www.tasmanianart.com.au>

# Launceston Art Society Inc Welcomes Fiona Anderson Animals in Pastels

in the wild, in the bush, in the paddock or in your backyard! Saturday & Sunday, 3rd & 4th May



Professional pastelist, Fiona Anderson lives in Melbourne, where she is also a practicing Small Animal Veterinarian. She is a member of the Wildlife Artists Society of Australasia, Friends of the Zoo in Victoria and the Pastel Society of Victoria Inc.

Fiona's passion for animals overflows into her artwork, where she draws and paints in graphite and pastel. Her artwork embraces animals and birds of all types, especially equine and wildlife subjects. Each artwork is painted with the aim of capturing the integrity and uniqueness of an individual animal, be it family pet or tiger, parrot or galloping horse.



In this workshop, Fiona will tutor students in the use of different materials and boards on which to paint. She will also demonstrate her techniques for creating realistic effects in areas such as feathers, fur and hair.

**This Pastel Workshop will be held at**  
Gill & Peter Waddle's Studio,  
35 Collins Street, EVANDALE

To participate in this workshop or to find out more, note the details below.

**Date** Saturday 3rd & Sunday 4th May 2014

**Time** 9.00 am - Set up work stations for 9.30 am start.

3.30 pm - Reflection before conclusion at 4.00 pm.

**Cost** Two days - \$180 - Morning and Afternoon Tea included daily

Please advise coordinator of special dietary needs. Tea and Coffee provided. BYO own lunch daily.

**Make Your Payment by Friday April 20 to the Treasurer:**



# ART + HOSPITAL

with **Doctor Richard**

## A WORKSHOP WITH A DIFFERENCE!

Spend a day with Richard Klekociuk and bring back to life any of your paintings or drawings that you consider "failures". Bring as many pieces of work that you like plus your own art materials and Doctor Richard will show you how to perform painless surgery and turn your unwanted artworks into creative treasures! We all at some time produce artwork that we're not happy with. Now's your chance to redeem them! This is both a practical and a theoretical workshop. Dr. Richard will reveal how to avoid future failures and improve your success rate. A fun day is guaranteed!

Richard Klekociuk is a multi-talented Tasmanian artist whose work is recognized Australia wide. He has tutored many workshops here and on the mainland. His enthusiasm and tutoring skills ensure that this workshop will be well-worth your participation.

**Cost** \$65 - includes morning and afternoon tea

**Date** Saturday 15th March

**Time** 9.00am to 4.00pm



# A Workshop in Oils and Acrylics with Gerry Jensen

***"The Secret ... to taking your paintings to another level!"***

**Saturday & Sunday, July 26th & 27th 2014**

Do you find it a bit daunting to get beyond where you are ... to where you want to be, painting wise?

So what can we do to bring our paintings and skills up a notch or two? One of the biggest hurdles is overcoming the belief that every painting has to work, has to be a 'masterpiece' or something resembling all of the above – Not True!!

In this workshop I shall show you how you can achieve progress and enjoy the process – we should always be seeking to improve, to expand and to be inspired by what we are painting.

I will demonstrate how I found "The Secret". Are you game to come along and spend two days having fun, experimenting with a "Secret Surface", working with palette knives and brushes and a couple of other things. Of course I cannot tell you too much because ... it is .....

## ***"The Secret"***

Discover the secret to lifting your skills with Gerry at:  
Evandale Gallery  
Gill & Peter Waddle's Studio  
35 Collins Street EVANDALE  
**Date:** Saturday 26th & Sunday 27th July 2014

**Time:** 9.00 am - Set up work stations ready for 9.30 am start.

3.00 pm - Reflection before conclusion at 3.30 pm.

**Cost:** \$170 – Morning and Afternoon Tea included daily

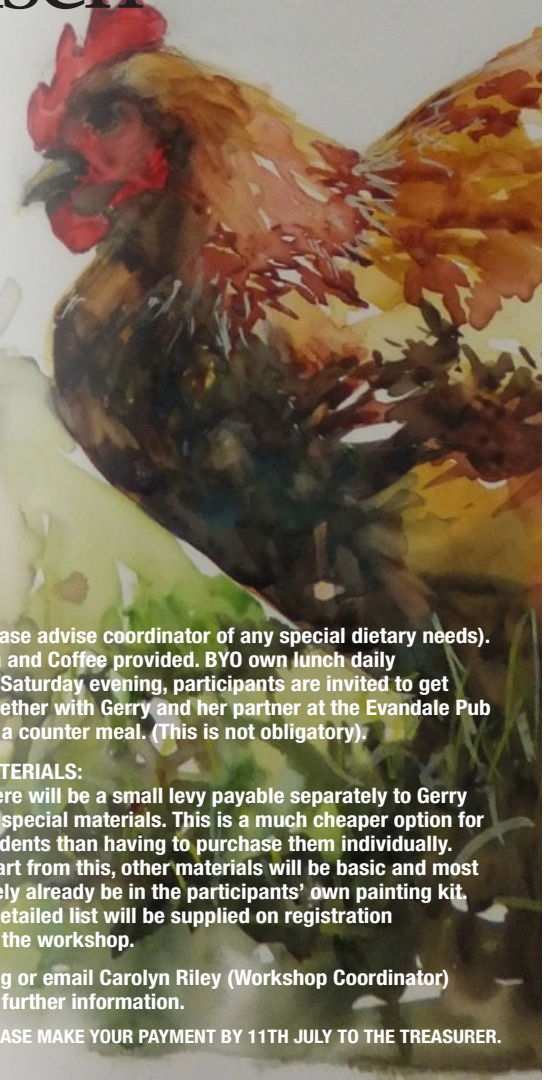
Please advise coordinator of any special dietary needs). Tea and Coffee provided. BYO own lunch daily On Saturday evening, participants are invited to get together with Gerry and her partner at the Evandale Pub for a counter meal. (This is not obligatory).

## **MATERIALS:**

There will be a small levy payable separately to Gerry for special materials. This is a much cheaper option for students than having to purchase them individually. Apart from this, other materials will be basic and most likely already be in the participants' own painting kit. A detailed list will be supplied on registration for the workshop.

Ring or email Carolyn Riley (Workshop Coordinator) for further information.

PLEASE MAKE YOUR PAYMENT BY 11TH JULY TO THE TREASURER.





# Silk Painting Workshop with Evelyn Antonysen



## ***Silk was used as a surface on which to paint before paper was invented!***

**Day 1** Types of silk, fixing the dyes, steam fix versus iron fix and chemical fix methods. Home steam fixing. But we will primarily work with iron fixed silk dyes/paints. Stretching the silk. Demonstrations of techniques followed by participants making small samples.... a minimum of 10 techniques including watercolour style (my preferred but the least common way of working on silk. I consider it the "ultimate watercolour experience... come and find out why), using antidiffusant, gutta resist, alcohol, deliberate watermarks. Drawn designs and free flow methods. The aim is to explore and decide which best suits your artistic style.

From these works you will choose one to make into a large brooch and one will be put into a card.... cost of materials and equipment is included in the materials levy. These items make great gifts and I have never had a participant who has not been happy with at least one work to make into a finished item. I like people to go away from my workshops with some finished personal art products of which to be proud..... no extra framing etc needed for these.

Preparation for day 2. Analysis of the artworks done today and decision on preferred method of working for a larger work.

**Day 2** Using your preferred style /method on a larger piece of silk. (These works will suit framing, making into a bag, inclusion in a quilting project or item of clothing or soft furnishing such as a cushion). You may have time to do two larger ones ... depending on working style.

**Materials and Equipment** provided in \$35 materials cost.....silk, silk dyes and paints, various salts, anti-diffusant, gutta, alcohol, wax, trifold card, polyester wadding, brooch/badge components, paper for working designs, Reynolds freezer paper, craft glue.

Equipment for use..... iron. flexihoops, stretcher frames, three pronged silk pins, steamer, badge/brooch construction equipment.

Participants should bring.... scissors for fabric (if you have some but I have sufficient to share), scissors for paper, broad permanent marker pen, pencil and eraser, soft watercolour brushes (goat hair and squirrel are good. Taklon/sablon are fair. This will not ruin your brushes but may stain some of the goat hair ones). A hake brush is useful for the larger work as is a Rigger brush and a flat ½ inch synthetic (taklon). (I will have some extra brushes to borrow). Hairdrier is essential. Empty palette... need not be large (again I probably have enough so don't go and buy one... just bring if you have without washing out all your expensive W/C paints). Disposable gloves and smock if you wish but I don't expect you will get messy. Mapping pins if you have them. Masking tape (wider rather than narrow... can share a roll). Cloth for spills, tissues. Water pot.

**DATE** Saturday and Sunday 16th and 17th August

**WHERE** Gill & Peter Waddle's "Evandale Studio"

**COST** For 2 day workshop is \$165, payable to LAS

There will be a separate, additional cost of \$35pp, for the cost of materials.

From this, each participant will have a minimum of a silk brooch, handpainted silk card and silk panel to make into something such as a bag or cushion or to frame.

Because the cost of silk and dyes alone is quite expensive, it is to the participants' advantage to have the materials supplied by the tutor as a bulk purchase.



## Drawing from Life

Ray Pethick

April 2014

Costume drawing

See website for details soon

## 'Beginners' introduction to various mediums'

A one-day workshop with Rachel Howell.

October 2014

Do you want to take up painting?

Have you tried one medium and would like to have a go at another? You don't quite know where to start?

Rachel will introduce you to a range of mediums (acrylics, watercolour, pastels etc.)

She will advise you on what you need, how and where to start.

She will demonstrate each medium, using a simplified approach that won't overwhelm you!

Techniques including drawing skills will also be addressed.

You will in turn have an opportunity to try your skill.

Rachel has won many recent awards. She is a multi-talented artist of renown and is a qualified, experienced art teacher. Her workshop will offer students a personalized introduction to the medium of their choice, whilst touching on concepts such as drawing skills, design and composition. The workshop will draw on individual creativity in a supportive and encouraging environment.

## Demonstrations and Informal Guidance

Margaret Coombes

November 2014

Margaret coombes, watercolourist

# Exhibitions.

## EXHIBITIONS - ARE THERE ANY? OF COURSE THERE ARE, JUST NOT YET! KEEP PAINTING!

The re-roofing works at Eskleigh may take 12 to 15 weeks so please check the June Art Beat for due dates for entries and delivery times.

### JULY - RAISING THE ROOF

- Dates to be confirmed.
- Prize for Best Painting-Donated by John & Beverly Crook of Fine Art Framers.
- Could relate to roofs but not essential.
- Bullock Consulting Award for the Best Painting that relates in some way to a roof or building.
- Opening: Sunday afternoon, date & time to be advised.

### AUGUST - CELEBRATING LIFE AT HOLY TRINITY

### AUGUST/SEPTEMBER - RETURN TO RITCHIES MILL

New/previous committee member, Richard Klekociuk has secured a booking for an exhibition at the Mill Providore Gallery. ONE WORK ONLY TO BE SUBMITTED AS SPACE IS LIMITED. SELECTION MAY BE REQUIRED. WORK NOT TO HAVE BEEN PREVIOUSLY EXHIBITED WITH LAS. NB: NORMAL PROVIDORE COMMISSION WILL APPLY OF 35.5%

ENTRIES DUE: Friday, 15th August.

DELIVERY OF WORK: Wed, August 27th between 9 & 10:30am.

OPENING: Thursday, 28th August at 6pm.

EXHIBITION CLOSES: Tues, September 16th.

COLLECTION OF WORK: Wed, Aug 17th between 9 and 10.30am.

### OCTOBER/NOVEMBER - TRIPLE A @ ESKLEIGH

### DECEMBER/JANUARY - COMBINED ART SOCIETIES OF TASMANIA



## Brushstrokes Art Exhibition

Another Brushstrokes Art Exhibition was held for one week in January at Bridport. It was opened by Dr Chee Yong who had given the group a fun and informative workshop a few months earlier using acrylic paint and sand.



*Photo: Marg Brain is a member of the LAS and sold one of her workshop paintings.*

## BUS TRIP TO LAKE ROWALLAN THURSDAY, 15TH MAY MEET AT JACK'S BUS CO, LONGFORD, 9.00 AM

Lake Rowallan, near the Walls of Jerusalem, is well worth a visit for its natural beauty. Also the reflections in the lake and the picturesque countryside along the way are well worth seeing.

Our first stop is Deloraine where we will visit the Studio of Tony Smibert who, along with his wife Carmel, has offered to give us a talk plus tea and coffee.

Lunch will be at Lake Rowallan and, time permitting, we will visit the Alum Cliffs near Mole Creek on the way home.

BYO lunch and nibbles, camera and sketch book. Please book as soon as possible and no later than 3rd May. Cost - \$36 per person.

Contact John Doyle for further information on 63348239



## Elizabeth Kapeller Women of the Hydro

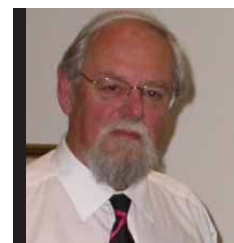
The picture is called "Elizabeth Kapeller - Woman of the Hydro". It was painted by one of our newest members, Marilyn Theisel.

Marilyn wanted to honour those women who travelled from mainly Europe and settled with their husbands in the Hydro villages of Tasmania. They often did not speak English, and found the life difficult away from their homelands.

Elizabeth Kapeller was able to speak different languages, and was determined to learn English. She became a spokeswoman and helped to improve the village life. She also helped towards two large books written on the Hydro Power Scheme. This painting has now been purchased for the new Hydro Power Station museum, so it will now be able to honour those women who were forgotten for many years. Whilst the men were building the needs for Hydro Electricity for Tasmanian towns and cities, these women became the mothers of future Tasmanians.

Marilyn has used Ink tense pencils and watercolour pencils. Ink tense pencils are fairly new on the market, and being ink, one can't make many mistakes, as mistakes are there to stay! Marilyn used layering of tones, often five layers to get to the final result.

*"The Door at the Duck Reach Power Station" by Marilyn Thiesel was voted 'People's Choice' winner at the recent exhibition held at Eskleigh. Well done Marilyn.*



**Dr Peter Noel-Perkins**  
21/05/1928 - 07/02/2014

## A Man Called Peter

Members who were lucky enough to have been with LAS in 2005, will remember our then President Dr Peter Noel-Perkins.

A man most charming and correct in manner, an inspirational guide in the painting sessions at Evandale, a man with humour to share and a smile to brighten the dullest day. He encouraged each committee member to be responsible for a different task, a system that is still in use.

His vision of revamping the previous single sheet newsletter into "a magazine you'd be proud to have sitting on your coffee table for guests to see" resulted in the LAS publication of Art Beat – we certainly thank him for that.

Having shared his wisdom and love, talent and knowledge with LAS for several years, Peter and his lovely wife Margaret, moved from Evandale to Exeter. It was at the All Saints Church at Exeter on 12 February 2014 that we farewelled Peter Noel-Perkins at one of the most beautiful and moving memorial services that I have attended. The love and respect in which this architect, artist, orator, dreamer and ever so clever man was held, was evident from within his family and within the community. We were blessed to have him as our guide.

*Vale & farewell Peter.*



# Glover Lover's Afternoon Tea

Sunday, 9th March at 2pm.  
Gill Waddle's Studio, Evandale.

Members from the Art Society of Tasmania will be heading north to view the Glover. We will be hosting an informal afternoon tea at Gill Waddle's Studio at Evandale. Please come along and enjoy some refreshments and stimulating conversation with like-minded people.

Contributions to afternoon tea very welcome – please phone Aileen Gough if you can help – 63981187.

## Membership

LAUNCESTON ART SOCIETY INC  
MEMBERSHIP **APPLICATION** [ ] **RENEWAL** [ ]  
Annual subscriptions are due for payment each January

Name: (Mr/ Mrs/Ms/ Miss) \_\_\_\_\_

Address \_\_\_\_\_

\_\_\_\_\_ P/code \_\_\_\_\_

Phone \_\_\_\_\_

Mobile \_\_\_\_\_

Email \_\_\_\_\_

**Preferred Painting Medium** Oils [ ] W/colour [ ] Pastel [ ]

Acrylic [ ] M/Media [ ]

Other \_\_\_\_\_

**Style of Work:** Contemporary [ ] Traditional [ ] Abstract [ ]

Other \_\_\_\_\_

**Do you wish to enter exhibitions?** Yes [ ] No [ ]

### PLEASE TICK APPROPRIATE BOX

**Full Membership** [ ] \$30 per year

Membership includes copies of our quarterly newsletter Art Beat, join in regular painting days, excursions and attend workshops, mini and major. As a full member you are also invited to exhibit with other artists at LAS exhibitions.

Subs paid after 1st April will be \$35.00

**Friends of the Society** [ ] \$15 per year

This is for those who may paint, but do not wish to exhibit their work or participate in workshops, non painters, past painters or simply those in our community with a love of art, who enjoy keeping in touch with local artisans' output.

**Student Membership** [ ] \$12 per year

Junior [ ] Age \_\_\_\_\_

Adult Full Time Student [ ]

*photocopy of current student ID must accompany application*

To encourage students of all ages to join in and experience the joy of exhibiting with other artists.

**Please complete this form & mail with cheque / money order to:**

**The Treasurer**

**Launceston Art Society Inc**

**PO Box 1476 Launceston 7250**

**OR This form can be completed online with payment made by Netbank**



## LAS Committee 2014

<b>President</b>		
Carlene Bullock	6327 3799	carlene.bullock@gmail.com
<b>Vice President</b>		
Carolyn Riley	6328 1697	carayne@bigpond.com
<b>Secretary</b>		
Carol Hole	6330 3676	clhole1@bigpond.com
<b>Treasurer</b>		
George Green	6331 4787	
<b>W'shop Coordinator</b>		
Carolyn Riley	6328 1697	carayne@bigpond.com
<b>Ass't W'shop Coordinator</b>		
Andrea Robins	6398 2538	e881111@ozemail.com.au
<b>Exhibitions Coordinator</b>		
Carlene Bullock	6327 3799	carlene.bullock@gmail.com
<b>Ass't Exhibitions Coordinator</b>		
Lynne Hutchins	6330 1943	brucenlynnehutchins@bigpond.com
<b>Art Beat Editor/Website</b>		
Pauline Winwood	0407 552 578	pjwinwoodphotography@hotmail.com
<b>Membership Officer</b>		
Diana Lord	6391 1490	dlord52@gmail.com
<b>Publicity and Marketing</b>		
Richard Klekociuk	0427 577 296	artkleko@gmail.com
<b>Excursions Officer</b>		
John Doyle	6334 8239	johndoyle@westnet.com.au
<b>Social Officer</b>		
Aileen Gough	6398 1187	
<b>Committee Members</b>		
Rachel Howell	0419 304 146	rachelbhowell@hotmail.com
Eva Mehegan	6327 2320	
Shirley Pitt	6331 2399	shirleyj48@hotmail.com
Louise Skabo	6334 6787	rlskabo@gmail.com
<b>Non Committee Members</b>		
Phil Austen	6393 6986	austpr@bigpond.com
Ray Pethick (graphic design)	6391 5762	info@raypethick.com.au

**Website** [www.artlas.org.au](http://www.artlas.org.au)

*Advertising Rates Per Issue in ART BEAT*

*Quarter page \$13; Half page \$25; Full page \$50*

*A 5% discount is still given to advertisers who place four consecutive insertions of the same advertisement paid in advance and 10% to financial members.*

*Payments to: The Treasurer, LAS, PO Box 1476, Launceston TAS. 7250*



**Mr Harvey Cuthill**  
Patron

*Pauline Winwood*  
PHOTOGRAPHY  
& ART  
*'through artistic eyes'*



Phone 0407 552 578

Email: [pjwinwoodphotography@hotmail.com](mailto:pjwinwoodphotography@hotmail.com)

Web: [www.paulinewinwoodphotography.com.au](http://www.paulinewinwoodphotography.com.au)

Enjoy a days drawing  
in a professional studio  
environment under  
expert tuition.  
All drawing materials  
and model provided.

Classes held weekly,  
3 Hour Session \$50.00 inc.

Epping Studios  
13548 Midland Highway  
Epping Forest

Call Ray Pethick  
0418 581 783  
or email  
[info@raypethick.com.au](mailto:info@raypethick.com.au)  
[www.raypethickartist.net](http://www.raypethickartist.net)

*As class sizes are limited,  
bookings are essential.*

DrawingfromLife





100 Viewbank Road Newnham, Launceston 7248  
promoting traditional art theory and practice as tools for personal expression



Art Classes for Adults  
Mondays and Wednesdays  
6.30 - 8.30pm flexi times  
6326 3609  
me@sandrapetersen.net

### simple art language

of lines, shapes, colours, directions,  
sizes for personal expression

**demonstrated techniques** for  
drawing, painting, sculpting. designs

**subjects** animals, sea creatures, birds, people,  
landscapes, seascapes, buildings, faces

- \* **beginners for fun**
  - \* **serious art students**
- catered for in appropriate  
groups or private tuition

4 week tuition blocks each month  
of specific topics and techniques  
\$80 for 4 X 2 hour lessons payable  
in advance  
Private one to one tuition available

## Art Classes for Children

Sandra  
Petersen

B.Ed.A.P.D. Fine Arts  
Registered Teacher



### simple art language

of lines, shapes, colours, directions,  
sizes for personal expression

**subjects** animals, sea creatures, birds, people,  
landscapes, seascapes, buildings, faces, fantasy

**demonstrated techniques** for  
drawing, painting, sculpting.

**beginners for fun to  
serious art students  
catered for in small  
compatible groups**

**\$20  
voucher!!  
8th lesson is  
free!!**

100 Viewbank Road Newnham  
<http://www.sandrapetersen.net>



**After school** 4 - 5.30pm  
weekdays flexi - times

**holidays**  
half day and full day workshops  
flexi - times for shift workers.

**6326 3609**

me@sandrapetersen.net





**FRAMESAVERS  
GALLERY  
AND  
FRAMING**

**218 Wellington Street  
(Just down from the Cheesecake Shop)  
Monday - Friday 10am - 5pm or by appointment**

**Save Big Dollars on Framing**

**Custom Made Frames**

**Exhibiting Artist Special - up to image size 510 x 340 mm.  
overall size with mats up to 700 x 540mm. made with  
beautiful Italian lime wash or teak timber mouldings,  
dbl. off white mats, clip on backs for easy re-cycling  
includes fitting, ready to hang**

**incredible value at \$89 while stocks last.**

**Check out our sample frames at  
[www.Framesavers.com.au](http://www.Framesavers.com.au)**

**PHONE 6344 7092**

**s p i d e r   w e b**  
**d e s i g n   a n d   b u i l d**



*Affordable web site design and maintenance.  
Domain name registration and web site hosting organised.  
Conversion of web artwork into print ready material.*

[www.spiderwebdesignandbuild.com.au](http://www.spiderwebdesignandbuild.com.au)  
[michael@spiderwebdesignandbuild.com.au](mailto:michael@spiderwebdesignandbuild.com.au)

**Michael Bok ☎ 0417368165 or 63315549**



**GREG AND GILL'S PLACE**

SELF-CONTAINED HOLIDAY ACCOMMODATION

Full breakfast provisions,  
including home made bread, jams & bottled fruit  
Secluded corner of historic Evandale,  
Peaceful garden setting, rural views to Western Tiers  
35 Collins Street, Evandale  
**Phone: 6391 8248**

**GRAPIC**  
**design**

**helping you see things differently**

logo / brand design  
website design  
booklet / brochure design  
packaging / advertising and promotional design  
exhibition / signage design

ray pethick 0418 581 783 or 6391 5762  
[info@raypethick.com.au](mailto:info@raypethick.com.au)  
[www.raypethick.com.au](http://www.raypethick.com.au)





57 INVERMAY RD INVERESK  
03 63347775

### Specialising in Art Supplies and Service for Students to Masters.

Matisse, Winsor & Newton, Holbein, Art Spectrum,  
Fragonard, Arches, Fabriano, Canson, Cretacolor,  
Pro Arte, Neef, Fredrex, Rembrandt  
and many other brands

---

Complete Framing Service  
Conservation, Museum and Specialty Framing

---

DIY Framing Supplies, Equipment and Moulding

---

Matt Boards, Foam Core, Wire, Tapes etc

---

Hanging Systems  
Archival Storage Systems and Materials

---

**57 Invermay Road, Inveresk, Tasmania 7248**  
**Phone / (03) 6334 7775 Fax (03) 63344450**



Come upstairs & browse our extensive range of art materials.  
Our friendly, expert, staff will help you with all your art needs.



*all things  
to art people*

While you are in store join our Art Club...  
members receive points on most items storewide\*  
which can then be redeemed on any art products.

\*Excludes recharge vouchers, newspapers and stamps.

The Mall, Launceston  
Phone 03 6331 3011 [flehman@birchalls.com.au](mailto:flehman@birchalls.com.au)



If undeliverable return to  
**The Launceston Art Society Inc**  
PO Box 1476, LAUNCESTON TAS 7250

PRINT POST APPROVED

PRINT  
POST

PP1000002789

POSTAGE  
PAID  
AUSTRALIA