



# artbeat

The quarterly newsletter of the Launceston Art Society

DECEMBER 2013

## Meandering2013



Detail from 'Miss Meander' by Pauline Winwood,  
winner of Major Prize - Meander Valley Council Acquisitive Award



- 2 AGM Notice
- 3 Members News
- 4 Members Memos
- 5 Presidents Palette
- 6/7 Workshops 2014
- 8/9 Workshop Roundup
- 10/13 Meandering 2013
- 14 Art Diary
- 15 Exhibitions
- 16/17 Resident Artists
- 18/20 Christmas Dinner
- 22 LAS Membership
- 31 LAS Committee 2013

# AGM

The Annual General Meeting of the Launceston Art Society Inc. will be held on **Monday 10th February 2014 at 11 am** at Eskleigh Scone Drive, Midland Highway, Perth.

Positions to be elected at this time are Officers of LAS and ordinary committee members.

**You must be a 2014 financial member to vote.**

If you would like to join the wonderfully progressive team from 2013, please let a current committee member know, or, alternatively, if there is a member you would like to have on our committee, fill in the nomination form below and send it to

**The Secretary, LAS, PO Box 1476 Launceston 7250.**

Nominations can also be made from the floor on the day

## NOMINATION FORM AGM Launceston Art Society Inc 2014

I, \_\_\_\_\_  
Please print your name

do hereby nominate \_\_\_\_\_  
Please print name of nominee

for the position of \_\_\_\_\_  
President, secretary, treasurer, committee member, etc.

of the Launceston Art Society Inc

I accept this nomination \_\_\_\_\_  
Nominee to sign

I, \_\_\_\_\_ second this nomination  
Secondor to sign

*If there is something you would like your committee to do, eg., an event you'd like to be part of, or any other suggestion that would further your enjoyment as a member of LAS, let the secretary know so that it can be put on the agenda for the AGM or raised at a regular monthly meeting.*

# Members News

## ARTEX - ULVERSTONE ROTARY ART EXHIBITION

Several of our members took out prizes at the recent exhibition of ARTEX.

Congratulations to:

**Bobby Dixon** - Quadrant Dentistry Watercolour Award

**Rachel Howell** - Goodstone Group Oil Award

**Richard Klekociuk** - Bill Cruz Drawing/Pen/Ink Award

**Gerry Jensen** - Sen Anne Urquhart Pastel Award

**Dan Villiers** - Leonie Hiscutt MLC Mixed Media Award

**Sandra Petersen** has just received her second grant from Arts Tasmania. She will be the Artists in Residence in 2014 at Raymond Arnold's studio, LARQ. Here she will learn his etching techniques and painting skills applied to the West Coast Landscape Psychology. Sandra's first grant enabled her to learn pastel techniques from Jonathan Bowden and sculpting in architectural polystyrene.

## GLOVER LOVER'S GET TOGETHER

Come one, come all - join us and members of the Tas Art Society and Burnie Coastal Art Group at an informal Get Together on Sunday, 9th March at 3.00 pm. Our visitors will have viewed The Glover and will then visit Eskleigh to view the Triple A Exhibition. Please bring a plate to share.

Please advise Aileen Gough on 63 98 1187 if you are able to attend.

## Meander Valley Drive Around Saturday 28th September

Five very brave members fronted up at Entally in pouring rain and ventured forth! We arrived at Deloraine for morning tea and thankfully the rain had stopped, although still overcast. We then headed south to Mole Creek, and by then the sky showed patches of blue and shafts of sunlight. Turning left we headed for Caveside which was magic with lots of atmosphere, brilliant green fields and clouds drifting over the Western Tiers with glimpses of snow on the peaks. We all managed some great photos, including lots of young lambs and baby calves. We continued on through Western Creek, passing 'Cheshunt' and proceeding through Meander to Huntsman Lake. The view from the boat ramp was perfect, with still waters and a back drop of snow-capped mountains. We then enjoyed lunch before heading home. Hopefully some great paintings will eventuate from the day out.

## Farewell

We wish to say farewell and thanks to Richard Klekociuk. Richard and his wife, Val, will move to Queensland early next year to live. Richard has been an LAS member for many years and has always been supportive by exhibiting, running workshops and acting as MC among other things.

Thanks Richard K and all the best up north.



**The Committee and fellow members of Launceston Art Society Inc. extend a warm welcome to two rejoining members :- Michael Manhire & Annabelle Carr.**



**Louise Skabo**  
Membership Officer

## Members Memos

### Memo 1

**The next 'Eskleigh Gallery' Roster** will be out by mid December for the first quarter of 2014. If you will be away during this time and were not on the last roster from September to December 2013 (in which case you will not be included on this roster), please let me know to help me during this busy family season. LAS will not have a roster during Christmas - New Year from Friday 20 December and will be starting again on Friday 10 January 2014.

THANK YOU to all members who have fulfilled their roster a few times this year so we can fulfil our agreement with the Eskleigh Foundation.

### Memo 2

#### **Subscriptions for Launceston Art Society Membership 2014**

are due on 1 January 2014. Please note that subscriptions were increased at the 2013 AGM and that ALL RENEWALS of full membership will be \$30. You can pay this via internet banking BSB 067003 A/C # 28016820, by cheque to The Treasurer, PO Box 1476, Launceston 7250, or by cash to George Green the Treasurer or another Committee member. Please fill in a Renewal / Application form available on the internet or on page 22 of this edition of Art Beat.

### Memo 3

**LAS Committee need a Membership Officer** ( a great way to get to know many of your fellow members) and a Publicity Officer in 2014 (this mainly involves contacting the wonderful Arts Writer at the Examiner who is so helpful to LAS). Think about if you can contribute to your Society for a couple of years in these roles – we have enjoyable Committee meetings and this week we are all getting together for a lovely lunch to celebrate another successful LAS year. *See AGM Form on page 2.*

### Memo 4

#### **ART Sessions with the Eskleigh Home residents**

a special thanks to Aileen Gough who did art sessions with the residents for most Mondays over the last two months. She was ably assisted by her granddaughter for a few sessions and then by Beverley Glen upon her return from overseas. See the article on Art Sessions in Art Beat – our artists come up with wonderful ideas and our Eskleigh Home artists just love meeting LAS volunteers and doing drawing and painting.

Please let me know ( phone Louise 0419 399 041) if you are willing to do just a few hours in 2014 as LAS needs more volunteers from mid January onwards. Have an enjoyable Festive Season

Membership Officer / **Louise Skabo**

As I write it is still November but December and Christmas are not too far away. Is it a bad time to mention money? In the New Year your increased LAS subs will be due and-particularly if you have been a little carried away with the present buying - you may have to decide if your LAS membership is of value to you. Thanks to Pauline Winwood, Phil Austen and graphic designer, Ray Pethick you have received four copies of Art Beat and I hope that after your first flick through to look at the pictures you have kept them handy to remind you of what's on and where. Courtesy of Carolyn Riley and her mentor Eva Mehegan, you have had the opportunity to attend many and varied workshops during the year, and who could forget Artists in Action? You have been invited to several exhibition openings this year and most of them have not required money at the door. Thanks to Aileen Gough and her helpers - and the occasional guest who gets roped in -the food is always enjoyable and avoiding the washing up is easy! The wine waiters I admit have not had hospitality training but they are pleasant and willing.

The painting studio at Eskleigh continues to be an enjoyable space for the Monday Painters and a winter refuge for the Northern Watercolourists and could be a space for any member who has need of a studio. If you are sometimes lacking in inspiration John Doyle and Philippa Hirst have organised excursions to try and remedy that situation.

How many masterpieces do you produce in a year? The LAS has provided you with at least ten exhibitions at four different venues to display your work and no matter how many paintings are entered Lynne Hutchins and I always have the best time hanging them. What more could you want?

Of course, I must point out that LAS membership is not all about you. As with most organisations, time and effort are required from members too, particularly with gallery sitting at Eskleigh. In theory, given our membership numbers, it should only be necessary for members to commit to a couple of days a year but in practice it works out to more as not all our members are as physically fit as they once were, travel, holidays and family responsibilities are an important part of life and illness can interrupt our plans. You all know how I feel about having an exhibition space at Eskleigh (I do see the rolling of eyes and the "Here she goes again" expressions) so I won't repeat myself-much-but exhibitions have traditionally been an important part of what the LAS does. Is it time to start some new traditions? Possibly, but I can't imagine a time, and hope I don't have to, when it isn't necessary to hang works for viewing in a gallery, but just view an exhibition by some electronic means. I'm reassured by the fact that it is still possible to buy books.

Our members are also called on to assist with art classes at Eskleigh with the residents, at Glenara Lakes and Aldersgate Nursing Homes and at various schools in the Meander Valley municipality. Teaching experience is not a requirement, just an effort to transmit our enthusiasm for our art to students of all ages. We also provide guides for the Tasmanian Art Awards at Eskleigh and for the Glover Exhibition, again not a chore but a worthwhile experience. Can you count? We also help man the door at the Glover.

The day to day running of the LAS is organised by our committee and as with most committees the end of the year brings resignations and retirements. I would like to thank Alison Wallace for her time on the committee and hope that she and Robert enjoy their new life in Hobart. Do you have skills that would make you an asset to our committee? Our AGM will be held on Monday Feb.10 2014 at 11am. Deliver your paintings for Triple A and stay on for the meeting. George, our treasurer will welcome your subs early in the New Year if you decide your membership is worthwhile. I hope while enjoying the Festive Season you have some spare time to spend on your art and can give some thought to where you may be able to assist the LAS so that we continue to flourish in 2014.



**Carlene Bullock**  
President

## Presidents Palette





With Carolyn Riley

## Painting on Silk with Evelyn Antonysen

### Creative Art Workshop

#### "The Versatility of Silk Painting"

Working on small pieces of silk you will learn wet and dry techniques, stretching silk, steam fix and iron fix dyes, gutta resist, salt, alcohol, wax, brush choice, use of hairdryer, antifusant ..... More details next year

Others in Expressions of Interest Phase:

- Introduction to Encaustic Painting
- Painting with a Palette Knife (Acrylic/Oil)
- Abstracting the Landscape in Watercolour.

A different approach to W/C using soft Saunders Waterford and super soft, highly textured Fabriano Torchon extra rough papers and paper from Burnie Creative paper.

- Technology, Innovation and Techniques-Watercolour.

A workshop exploring new materials for painting watercolour on/with, use of new techniques including new ways of presenting watercolour without glass. Instruction would be by presentation and demonstration and of necessity materials would be supplied. Participants would have the opportunity to "try before you buy" so it would be pressure free (no expectations to create any masterpieces) -just a fun/instructional/explorative day.

These are just suggestion for the most part .

Please register your expression of interest to Carolyn

Enquiries all workshops: **Carolyn Riley** 6328 1697

## Also **GERRY JENSEN** is back by popular demand.

*Gerry is a wonderful teacher, whether it be pastel, oil or watercolour, you are sure to benefit from attending a workshop with her. Keep an eye out for more details in the March copy of Art Beat and on the web site.*

## AMANDA HYATT

Amanda captures the emotion and the moment, rather than the detail and develops the magic of light.

**14TH & 15TH JUNE 2014**

We have been very lucky to get this booking - apart from this weekend, Amanda is fully booked until 2015!

Join LAS members and Amanda in this exciting Watercolour Workshop. More details to follow in next Art Beat, but get your name down NOW with Carolyn before this one is full!

Check out Amanda's work on her website <http://amandahyatt.com>



Payments for all workshops can be made by

Netbank Deposit

BSB: 067003

ACC: 28016820

Launceston Art Society

Remember to include your name & an abbreviated description of your deposit eg: APainter JM w'shop.



*"Tonal Drawing" outcomes were "to disseminate some knowledge from the days of artists who could draw and paint when their emotions ran high. "Pieter subjected us to disciplined use of tonal values established first before using colour. We were treated to his extensive knowledge of art history, websites to explore, and many of his favourite artists.*

*Pieter was very generous in sharing in written form, links to the exploration of artists who were masters of their craft. He encouraged us to practise drawing skills with drama, courage and intuition.*

*Pieter touched on materials; how to produce effects; surface preparation and how to make your own materials. He then proceeded to demonstrate skilfully on the subjects - a doll and a teddy bear.*

*He showed us many of the 'tricks of the trade' that give works an almost three dimensional impact and transform dull and flat areas into the dramatic and vibrant.*

*Day 2 / we revisited form and negative space, and the edges where they met and our usual drawing techniques were discouraged as we rolled the line, left gaps, smudged, etc. etc. Creating rhythm, daubing instead of wiping, using the sponge and shapers more than the pencil was enlightening as were the interesting ways learned to create textures and to lift off marks. New products were demonstrated to the group as a whole and to us individually. We were all generously guided by Pieter in our work.*

*"Be selective! Don't draw everything!" was his constant message. Suggesting a form worked well in drawing attention to the main subject. Another message was "structure and form are the priorities, not the detail".*

*Overall, participants went home happily with evidence of mastering new skills, out of our comfort zone. Thank you Pieter for being so informative and generous with your techniques, and with information to follow up in our web searches.*

**Sandra Petersen**





Meandering 2013 was officially opened by Mayor Craig Perkins on Thursday, 28th November at CCT in front of an appreciative audience.

Richard Klekociuk acted as MC (for what will probably be his last gig) and Carlene thanked everyone for coming and the sponsors for allowing the artists to concentrate on their work and have the added incentive of prize money to urge them on.

Carlene also thanked the children of Meander Valley schools for their participation and mentioned the following for their assistance with the 'Artists in Schools' programme: Margaret Baker, Carol Gale, Karolina Smith, Lois Lacey from LAS and Ann Kearon and Shirley Furmage from the MV Art Society. Lastly she thanked the judges who always have a very hard job. The judges this year were Mary Hudson from Burnie, Mrs Muriel Sluce from Launceston and Ms Leanne Halls, a member of the AST.

Patrick Gambles then presented a slide show of the artwork completed by the school children. This was very much appreciated by the audience as was evidenced by their response.



### Judges Comments

Bullock Consulting 'Essence of the Valley' - won by *Rachel Howell* / **6**  
Great contrast and use of tonal values.  
Good composition. Good use of medium.

Quamby Estate 'Best Natural Landscape' won by *Darren Meader* / **1**  
Good composition, very expressive sky, beautiful light penetrates the landscape, good use of contrast in texture, flow of paint and tone.

Heritage Tasmania 'Best Heritage' won by *Lolita Warboys* / **3**  
Very strong painting, good design, great detail and good contrast of near and far.

Deloraine & Districts Community Bank 'Best Agriculture' - won by *Lynne Hutchins* / **8**  
Excellent design, nice grouping and placement of the animals. Well executed painting and understanding of the medium.

Quadrant Super 'People of the Valley' won by *Alison Cooper-White* / **7**  
Good use of colour, expressive eyes and good understanding of form. Conveys the strong character of the subject.

Meander Valley Council 'Encouragement Award' won by *Lee Adamson-Ringk* / **4**  
Great use of textural diversity, good composition and good use of the medium. Very atmospheric and great sky.

Mayor's Highly Commended: *Gerry Jensen* / **2**  
Managed medium extremely well, good composition and captured the expression of cows.  
*Carolyn Riley* / **9**  
Well portrayed, pleasant typical country school house. Good design.

Meander Valley Council 'Acquisitive Award' won by *Pauline Winwood* / **5**  
Very well drawn, good composition, good perspective. Great movement and feeling of the cow chewing its cud.



# Meandering 2013







Opposite / Lynn Hayward presents Lynne Hutchins, Best Agricultural.

Right/ Gerry Jensen receives Highly Commended Award from Craig Perkins.  
Far Right / Craig Perkins presents Darren Meader, Best Natural Landscape.



Right / Craig Perkins presents Alison Cooper - White, People of the Valley Award.  
Far Right / Pete Smith presents Lolita Warboys, Best Heritage Award.



Above Left / Craig Perkins presents Lee Adamson-Ringk, Encouragement Award.  
Above Right / Craig Perkins presents Carolyn Riley, Highly Commended Award.  
Opposite / Chester Bullock presents Rachell Howell winner of Essence of the Valley.



# Meandering 2013



Left Top / Lee, Neve, Aimee and Chris Adamson-Ringk.  
Left Centre / Pete Smith and Kate Ross.  
Left Bottom / Val and Richard Klekociuk.



Left / Richard Klekociuk doing his last MC.



Far Left / Pauline Winwood and Craig Perkins, Mayor.  
Left / Carolyn Riley.





## ArtDiary

Four months at a glance

### DECEMBER

05 Opening of 'The Gorge'

### JANUARY

01 Membership subs due  
31 Entries due for 'Triple A'

### FEBRUARY

10 Collect work from 'The Gorge'  
Deliver work for 'Triple A'  
**AGM**

### MARCH

09 Glover Lover Get-Together

### LAS JOINS FACEBOOK!

For those of you who are on Facebook, please search for 'Launceston Art Society Inc' and like our page.

We are using it to promote our exhibitions, workshops, events etc. and it would be wonderful if you could 'share' and 'comment' and 'like' our updates so that we reach a wider audience.

Spread the word and ask your Facebook friends to 'like' us too.

*You know what to do ... Click the button!*



# Exhibitions

## THE GORGE

Join us at the opening of our Summer Exhibition, The Gorge on Thursday, 5th Dec at 7pm.

The exhibition closes on Sunday, 9th February.

Collection of work: Monday 10th Feb 2014 between 9am and 11am.

## COUNTRY CLUB TASMANIA

Meandering 2013 continues at CCT until February 16, 2014.

At the conclusion of the exhibition prize winning works will be displayed at sponsor's premises and other works will be displayed at the Deloraine Creative Studio for approximately one month. Return of works to artists will be organised by Carlene and Lynne.

## TRIPLE A ANNUAL ACQUISITIVE ART AWARD

Members are invited to submit one or two pieces of work for the main exhibition on our Eskleigh exhibitions calendar.

All works are eligible for the \$1,000 Acquisitive Award sponsored by The Launceston Art Society.

Entries Due: Friday 31st January 2014.

Delivery of Work: Monday 10th February 2014 between 9 & 11am to be followed by the AGM

Deliver your paintings, have morning tea and stay on to meet the committee and your fellow artists.

The exhibition opening will be held on Friday 14th February 2014 at 7pm.

Cost will be \$20 per person.

Please RSVP to Aileen Gough 63 98 1187 by Friday Feb.7th.

Join members of the Art Society of Tasmania and the Burnie Coastal Art Group at our **Glover Lover's Get Together** on Sunday March 9th, 3.00 PM at Eskleigh.

The exhibition closes on Monday March 10th at 3:30 pm.

**No work is to be removed before the close of the exhibition.**

Collection of work: Tuesday March 11th 2014 between 9am and 12 noon. As we will be absent from Eskleigh until early May because of Eskleigh's Tasmanian Art Awards it would be appreciated if members could collect their work at this time or phone Carlene or Lynne to make alternative arrangements as our storage space is limited and works are in danger of being damaged.



# Resident Artists Painting for Pleasure

LAS artists think of imaginative art or craft activities for the residents' enjoyment, to enable them to express themselves through drawing and painting and to enhance their concentration and interaction with each other. The residents also get pleasure from conversation with LAS artists and this interaction plus their art creations boost their participation and inclusion as members of the wider northern community.

The last three years, the LAS volunteers have displayed the residents' art at The Tasmanian Art Award at Eskleigh in April. The hundreds of visitors to this popular art exhibition admire and purchase the art and this gives the residents a wonderful sense of achievement and success which all people need for greater happiness.

We have been a bit light on for volunteers this year and I hope more members step up in 2014 as it is a pleasurable and easy job for a few hours of your time the whole year! Some members feel nervous about working with the residents but this is totally unfounded as all are really pleasant, fun-loving, cooperative and so look forward to our visits. PLEASE GIVE IT A GO by doing an art session – you can start with another LAS member who knows the ropes. Ring Louise on 0419 399041

A BIG THANKS to those who have participated this year – Andrea Robins, Margaret McBain, Karolina Smith, Rieka Jansen, Beryl Pearn, Bruce Irwin, Elizabeth and Robin Smith, Aileen Gough, Annabel Johnson, Beverley Glen and Louise Skabo. Carlene Bullock and Lynne Hutchins have also filled in at times.

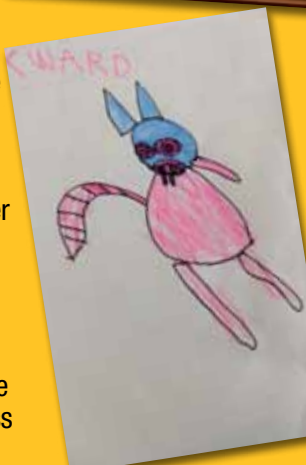


## Some of the art and comments by volunteers

Elizabeth Smith devised a simple but effective method of teaching the residents to paint trees replicating the intricate crossing over and under of branches as in nature instead of the lollipop shapes favoured by people learning to draw. These were silhouetted against a glowing background of blended colours of nature. Elizabeth says, "The results are always successful whether 8 or 80 years old."

Bruce Irwin writes: "Working with the residents at Eskleigh has been a very rewarding experience. At first they are a bit wary of new comers, but as soon as the barriers are broken and they feel comfortable with you they are a great lot with a great sense of humour, love attention, have all kinds of interactions going on between them which is mostly very humorous. In this particular workshop Beryl Pearn and I brought along a wooden chicken for the residents to copy and paint. The outcomes were quite different and interesting. There was a great deal of laughter about Kevin's paintings of the chicken- he did 4 and every single one looked like a bunny. He could see the likeness but everyone cracked up laughing and Katrina called them his "bunny-chooks". Kevin took it very well. I can sincerely say that I was moved by the experience of working with the residents."

Aileen Gough, granddaughter, Annabel Johnson and Beverley Glen have devised some fantastic and colourful canvasses featuring sailing boats, plates on the sideboard, a stained glass window, birds and flowers and bathing sheds. The residents each paint individual items on the chosen theme and afterwards the LAS volunteers cut and arrange them on a large canvass. When they painted the bathing huts, Aileen told how all the residents added chimneys as they felt something was missing! Annabel (12 years) tells stories about her life and Beverley about her travels. The residents seem to enjoy every minute. When Annabel visited on her birthday, the residents sang "Happy Birthday"!





# LAS Christmas Dinner

The LAS Christmas dinner at the Country Club Tasmania was a most enjoyable night for me and I hope for the 40 other members attending. It was a great opportunity to learn about the "other lives" of our members outside of their artistic ones.

A most interesting conversation with Elizabeth and Robin Smith about their 12 years living in Tanzania, Africa where Robin was a doctor and Elizabeth started up a little Nursery School; learning that Andrea ( new committee member this year) and Peter Robins settled in Tasmania for retirement due to the lure of trout; that Bill Warboys, like my husband, is finding it hard to store unsold paintings!



Mmmmm... Delicious says Lynne





# LAS Christmas Dinner



Finding out Beverley Glen was brought up in Bridport when the native orchids and other wildflowers were everywhere now covered in concrete or houses! and it was lovely talking to new member Marilyn Theisel and her husband who have also recently settled in Tasmania. Marilyn is studying art now and we look forward to seeing her contemporary art works.

*We hope more members can join us for future Get Togethers like this.*



Top Left / Dot and Kaye  
Bottom Left / Peter and Andrea Robins  
Top Right / Mark and Shirley  
Middle Right / Julie and Berris  
Bottom Right / Bill and Lolita Warboys

*Merry Christmas and a Very Creative New Year to all our Members*



LAUNCESTON ART SOCIETY INC

MEMBERSHIP **APPLICATION** [ ] **RENEWAL** [ ]

Annual subscriptions are due for payment each January

Name: (Mr/ Mrs/Ms/ Miss) \_\_\_\_\_

Address \_\_\_\_\_

P/code \_\_\_\_\_

Phone \_\_\_\_\_

Mobile \_\_\_\_\_

Email \_\_\_\_\_

**Preferred Painting Medium** Oils [ ] W/colour [ ] Pastel [ ]

Acrylic [ ] M/Media [ ]

Other \_\_\_\_\_

**Style of Work:** Contemporary [ ] Traditional [ ] Abstract [ ]

Other \_\_\_\_\_

**Do you wish to enter exhibitions?** Yes [ ] No [ ]

## PLEASE TICK APPROPRIATE BOX

**Full Membership** [ ] \$30 per year

Membership includes copies of our quarterly newsletter Art Beat, join in regular painting days, excursions and attend workshops, mini and major. As a full member you are also invited to exhibit with other artists at LAS exhibitions

**Friends of the Society** [ ] \$15 per year

This is for those who may paint, but do not wish to exhibit their work or participate in workshops, non painters, past painters or simply those in our community with a love of art, who enjoy keeping in touch with local artisans' output.

**Student Membership** [ ] \$12 per year

Junior [ ] Age \_\_\_\_\_

Adult Full Time Student [ ]

*photocopy of current student ID must accompany application*

To encourage students of all ages to join in and experience the joy of exhibiting with other artists.

Please complete this form & mail with cheque / money order to :

The Treasurer

Launceston Art Society Inc

PO Box 1476 Launceston 7250

# Christ Church Longford

## Special Art in Action and Exhibition Weekend

## February 21st/22nd/23rd

# 2014



To be held at the Parish Hall 2 William Street Longford

Opening Night: 21st February 2014, 7pm to 9pm

An opportunity to preview Art and enjoy music, canapés and wine.

Admission \$15.00 - Pre-sold tickets only

Contact Karolina 6391 2195 or Ro 6391 1493

## The Art Exhibition

Will open from 10am to 4 pm on Saturday 22nd and Sunday 23rd and will include artists from Evandale, Perth, Longford and Launceston

There will be "Artists In Action" on both days featuring well known artists Michael McWilliams, Ben Winwood, Sandra Petersen and Patricia Mechin

*A special feature will be "Celebrity Art", Guest Artists will make a small artwork for sale.*

*Entry is \$5.00 at the door.*

*All monies raised to benefit local and overseas missions.*

*All enquiries to : Karolina 6391 2195 or Ro 6391 1438*





Come upstairs & browse our extensive range of art materials.  
Our friendly, expert, staff will help you with all your art needs.



*all things  
to art people*

While you are in store join our Art Club...  
members receive points on most items storewide\*  
which can then be redeemed on any art products.

\*Excludes recharge vouchers, newspapers and stamps.

The Mall, Launceston  
Phone 03 6331 3011 [flehman@birchalls.com.au](mailto:flehman@birchalls.com.au)



Phone 0407 552 578

Email: [pjwinwoodphotography@hotmail.com](mailto:pjwinwoodphotography@hotmail.com)

Web: [www.paulinewinwoodphotography.com.au](http://www.paulinewinwoodphotography.com.au)

Enjoy a days drawing  
in a professional studio  
environment under  
expert tuition.  
All drawing materials  
and model provided.

Classes held weekly,  
Wednesdays & Thursdays  
3 Hour Session \$50.00 inc.

Epping Studios  
13548 Midland Highway  
Epping Forest

Call Ray Pethick  
0418 581 783  
or email  
[info@raypethick.com.au](mailto:info@raypethick.com.au)  
[www.raypethickartist.net](http://www.raypethickartist.net)

*As class sizes are limited,  
bookings are essential.*

**DrawingfromLife**



**INTRODUCTORY  
GIFT VOUCHERS  
FOR 2 SESSIONS  
\$100**



100 Viewbank Road Newnham, Launceston 7248  
promoting traditional art theory and practice as tools for personal expression



B.Ed.A.P.D. Fine Arts  
Registered Teacher

Art Classes for Adults  
Mondays and Wednesdays  
6.30 – 8.30pm flexi times  
6326 3609  
me@sandrapetersen.net

### simple art language

of lines, shapes, colours, directions,  
sizes for personal expression

**demonstrated techniques** for  
drawing, painting, sculpting. designs

**subjects** animals, sea creatures, birds, people,  
landscapes, seascapes, buildings, faces

- \* **beginners for fun**
  - \* **serious art students**
- catered for in appropriate  
groups or private tuition

4 week tuition blocks each month  
of specific topics and techniques  
\$80 for 4 X 2 hour lessons payable  
in advance  
Private one to one tuition available



B.Ed.A.P.D. Fine Arts  
Registered Teacher



### simple art language

of lines, shapes, colours, directions,  
sizes for personal expression

**subjects** animals, sea creatures, birds, people,  
landscapes, seascapes, buildings, faces, fantasy

**demonstrated techniques** for  
drawing, painting, sculpting.

**beginners for fun to  
serious art students  
catered for in small  
compatible groups**

**\$20  
voucher!!  
8th lesson is  
free!!**

100 Viewbank Road Newnham  
<http://www.sandrapetersen.net>



**After school** 4 – 5.30pm  
weekdays flexi – times

**holidays**  
half day and full day workshops  
flexi – times for shift workers.

**6326 3609**  
me@sandrapetersen.net





## FRAMESAVERS GALLERY AND FRAMING

218 Wellington Street  
(Just down from the Cheesecake Shop)  
Monday - Friday 10am - 5pm or by appointment  
Christmas Break - we will close from Monday 16 December  
and re-open on Monday 13 January 2014

Save Big Dollars on Framing

### Custom Made Frames

Exhibiting Artist Special - up to image size 510 x 340 mm. overall size with mats up to 700 x 540mm. - made with beautiful Italian lime wash or teak timber mouldings, dbl. off white mats, clip on backs for easy re-cycling - includes fitting, ready to hang - incredible value at \$89 while stocks last.

Check out our sample frames at  
[www.Framesavers.com.au](http://www.Framesavers.com.au)

Coming early 2014

Giclee artwork reproductions. Wide format super high resolution canvas printing for artists and photographers

Best Value Framing Guaranteed

**PHONE 6344 7092**

## spider web design and build



*Affordable web site design and maintenance.  
Domain name registration and web site hosting organised.  
Conversion of web artwork into print ready material.*

[www.spiderwebdesignandbuild.com.au](http://www.spiderwebdesignandbuild.com.au)  
[michael@spiderwebdesignandbuild.com.au](mailto:michael@spiderwebdesignandbuild.com.au)

Michael Bok ☎ 0417368165 or 63315549



### GREG AND GILL'S PLACE

SELF-CONTAINED HOLIDAY ACCOMMODATION

Full breakfast provisions,  
including home made bread, jams & bottled fruit  
Secluded corner of historic Evandale,  
Peaceful garden setting, rural views to Western Tiers  
35 Collins Street, Evandale  
Phone: 6391 8248



helping you see things differently

logo / brand design  
website design  
booklet / brochure design  
packaging / advertising and promotional design  
exhibition / signage design

ray pethick 0418 581 783 or 6391 5762  
[info@raypethick.com.au](mailto:info@raypethick.com.au)  
[www.raypethick.com.au](http://www.raypethick.com.au)





Specialising in Art Supplies and Service for Students to Masters.

**Matisse, Winsor & Newton, Holbein, Art Spectrum,  
Fragonard, Arches, Fabriano, Canson, Cretacolor,  
Pro Arte, Neef, Fredrex, Rembrandt  
and many other brands**

---

**Complete Framing Service  
Conservation, Museum and Specialty Framing**

---

**DIY Framing Supplies, Equipment and Moulding**

---

**Matt Boards, Foam Core, Wire, Tapes etc**

---

**Hanging Systems  
Archival Storage Systems and Materials**

---

57 Invermay Road, Inveresk, Tasmania 7248  
Phone / (03) 6334 7775 Fax (03) 63344450

## LAS Committee 2013

### President

Carlene Bullock 6327 3799 carlene.bullock@gmail.com

### Vice President

Carolyn Riley 6328 1697 carayne@bigpond.com

### Secretary

Carol Hole 6330 3676 chole1@bigpond.com

### Treasurer

George Green 6331 4787

### W'shop Coordinator

Carolyn Riley 6328 1697 carayne@bigpond.com

### Ass't W'shop Coordinator

Eva Mehegan 6327 2320

### Exhibitions Coordinator

Carlene Bullock 6327 3799 carlene.bullock@gmail.com

### Ass't Exhibitions Coordinator

Lynne Hutchins 6330 1943 brucenlneutchins@bigpond.com

### Art Beat Editor/Website

Pauline Winwood 6334 7454 win\_elec@bigpond.net.com

### Publicity

Louise Skabo 6334 6787 rlskabo@gmail.com

### Excursions Officer

John Doyle 6334 8239 johndoyle@westnet.com.au

### Committee Members

Aileen Gough 6398 1187  
Alison Wallace 6334 7303 rwallace@microtech.com.au  
Shirley Pitt 6331 2399 shirleyj48@hotmail.com  
Andrea Robins 6398 2538 e881111@ozemail.com.au

### Non Committee Members

Margaret Baker 6331 4441 johnbaker1@primus.com.au  
Ray Pethick 6391 5762 info@raypethick.com.au

**Website** www.artlas.org.au

*Advertising Rates Per Issue in ART BEAT*

*Quarter page \$13; Half page \$25; Full page \$50*

*A 5% discount is still given to advertisers who place four consecutive insertions of the same advertisement paid in advance and 10% to financial members.*

*Payments to: The Treasurer, LAS, PO Box 1476, Launceston TAS. 7250*



**Mr Harvey Cuthill**  
Patron



If undeliverable return to

**THE LAUNCESTON ART SOCIETY INC.**  
PO Box 1476, LAUNCESTON 7250.

PRINT POST APPROVED

PRINT  
POST  
PP1000002789

POSTAGE  
PAID  
AUSTRALIA